




# Table of Contents

- 1 Installation..... 1
  - 1.1 Download..... 1
  - 1.2 Compatibility..... 1
  - 1.3 Licensing..... 1
    - 1.3.1 Requesting an Evaluation license..... 1
  - 1.4 Plug-in Installation..... 2
- 2 Introduction..... 5
  - 2.1 Settings..... 5
  - 2.2 Stop/power-off on Async Channel..... 6
- 3 Multifile Example ..... 8
  - 3.1 Local / Network..... 8
  - 3.2 FTP-Server..... 10
- 4 Backup opportunities ..... 12
  - 4.1 Network Area..... 12
  - 4.2 USB-Stick / External Hard Drive..... 12
- 5 FAQ..... 14
  - 5.1 What is the difference between shutdown and power off?..... 14
- 6 Version History..... 15
  - 6.1 Plugin Version..... 15
  - 6.2 Documentation Version..... 15

# 1 Installation

## 1.1 Download

 DEWESoft® homepage  
<http://www.dewesoft.com>  
 you can download DEWESoft® plugins when you go to: Support – Downloads – Plugins


## 1.2 Compatibility

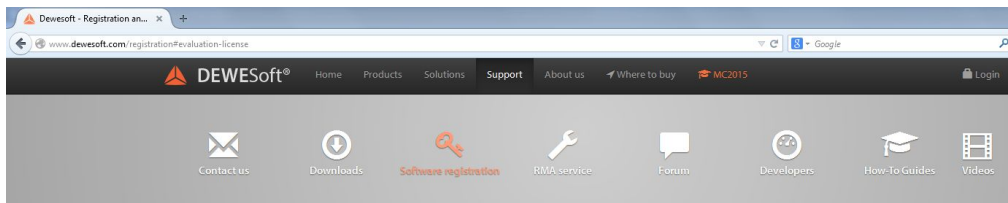
The plugin is compatible with DEWESoft® X1 and X2.  
 It has been tested on Windows 7 and 10 (32-bit and 64-bit).

## 1.3 Licensing

In DEWESoft® an additional license for the plugin is needed, it can also be written into the Dewesoft® device.  
 The plugin requires a valid DEWESoft® license. To test the plugin you can use a *30-days-Evaluation license*.

### 1.3.1 Requesting an Evaluation license

 Requesting an Evaluation license  
 To test the plugin you can use a *30-days-Evaluation license*.  
 You can request an *Evaluation license* from our homepage: <http://www.dewesoft.com/registration>



#### Software registration

<ul style="list-style-type: none"> <li>Online registration</li> <li>Offline registration</li> <li style="background-color: #0070C0; color: white; padding: 2px;">Evaluation license</li> </ul>	<p><b>Evaluation license</b></p> <p>To receive a fully functional 30-day evaluation license for Dewesoft software fill and submit the form below. Data marked with * is required. Please provide valid email address where we can send you the evaluation license.</p> <div style="border: 1px solid #ccc; padding: 10px;"> <p>Firstname * <input type="text" value="Your name..."/></p> <p>Lastname * <input type="text" value="Your surname..."/></p> <p>Company * <input type="text" value="Company name..."/></p> <p>Country * <input type="text" value="Select country..."/></p> <p>Email * <input type="text" value="Valid email address..."/></p> <p>Phone * <input type="text" value="Contact phone..."/></p> <p>Application * <input type="text" value="Select application area..."/></p> <p style="text-align: center;"><input type="button" value="Request license"/></p> </div>
--	---

*Illustration 1: Request Evaluation License*

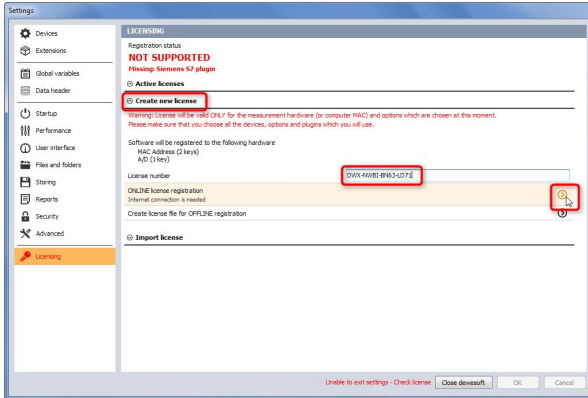
Click on Evaluation license, fill out all the required fields, then click the “Request license” button.

 **Activating the Evaluation license**

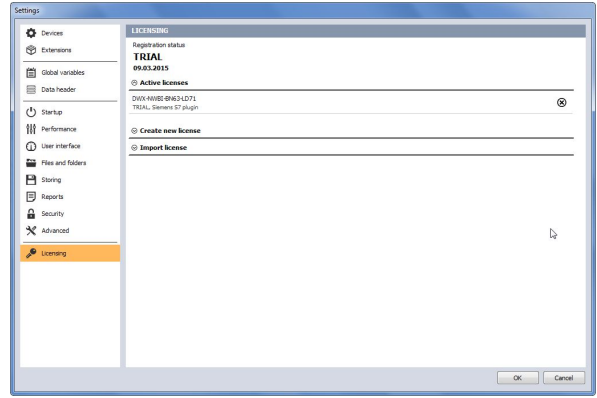
When you have received your trial licence key, open DEWESoft®, go to Settings → Settings, then select the Licensing tab sheet, click Create new license and enter the license code.

Now enter the license code and click the **Register online** button.

Then your new license key will show up in the list and should have the *Status Valid*.



*Illustration 2: Enter license key*

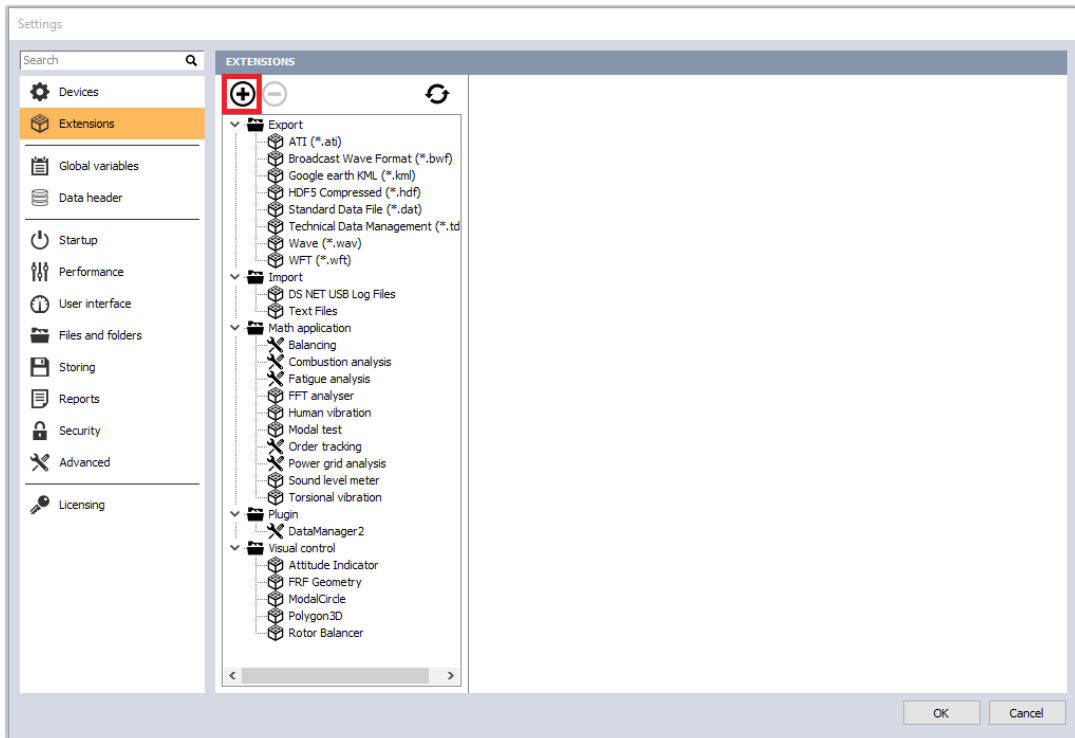


*Illustration 3: Valid trial license*

## 1.4 Plug-in Installation

Please copy the file DataManager2.dll into the Addons folder of your DEWESoft® installation. (e.g. C:\DEWESoft\Bin\X2\Addons), then start DEWESoft®.

Go to Settings → Settings → Extensions and click the + button to add the DataManager2 Plugin.



*Illustration 4: Extensions in Settings*

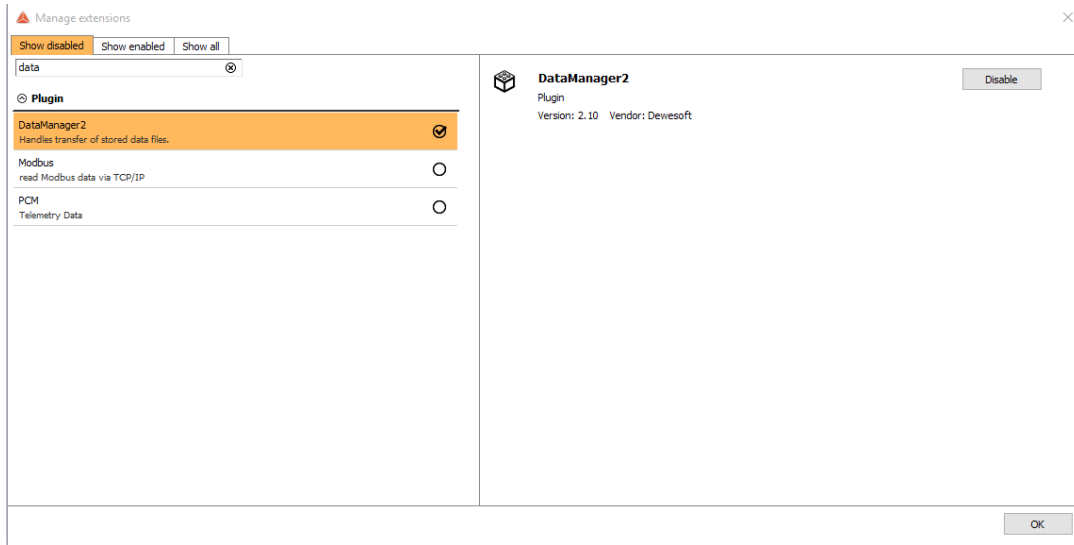


Illustration 5: Select Plugin

**HINT**



When you are using Windows® 7, then you must click the **Register plugins** button (the double-arrow-button) once and restart DEWESoft® before the plugin shows up in the list of available plugins.

## 2 Introduction

The Data Manager is a Plugin for copying or redundant storing of acquired data to FTP server or to local folder. It was developed for a better management of the data files. It can also remove old files or shutdown the computer after the transfer is done.

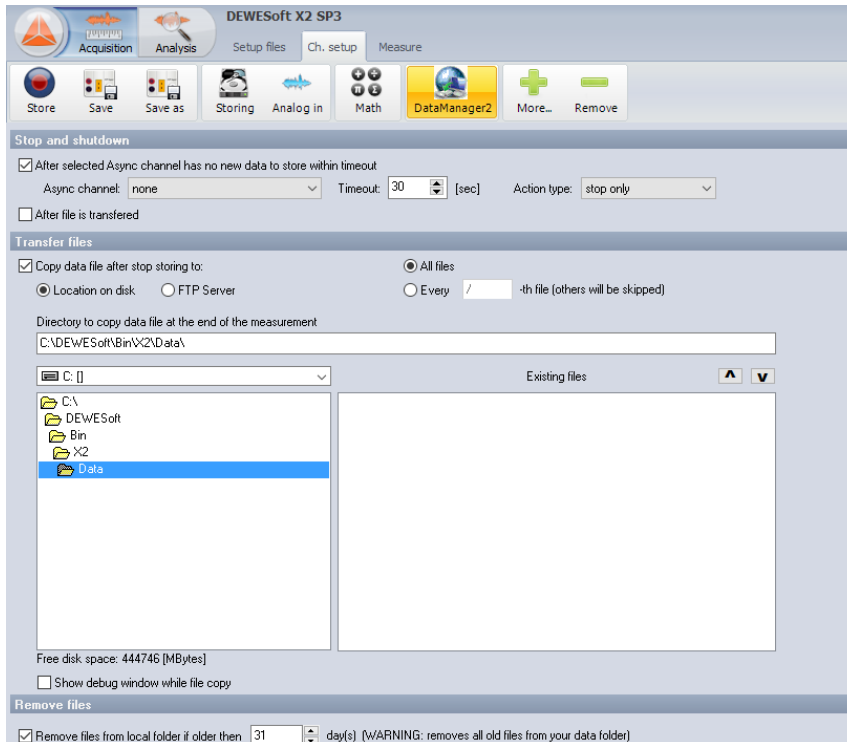


Illustration 6: Data Manager - Settings

### 2.1 Settings



#### Stop and shutdown

Select “*After selected Async channel has no new data to store within timeout*” to configure the Async channel, Timeout and Action Type.

You can choose between *stop only*, *stop & shutdown* and *stop & power off*.

(since Windows 7 shutdown & power off is exactly the same)

Select “*After file is transferred*” to stop and shutdown the system immediately after the file transfer is done.



#### Transfer files

Select “*Copy data file after stop storing to*” to copy all files or e.g. every 10<sup>th</sup> file to a location on the Hard Drive or to a FTP-Server.

Select “*Show debug window while file copy*” to see the progress of copying the files.



#### Remove files

Select a period of days where old files should be removed (It removes all old files from your data folder).

## 2.2 Stop/power-off on Async Channel

One application of this option is the usage in vehicles, e.g. in a car when CAN bus data is acquired at the same time. After the configured timeout (e.g. 30sec), when no new data is on the (e.g. CAN bus) channel, the plugin will automatically *stop*, *stop&shutdown* or *stop&power off* the system.

For example, if operated in a car, the car ignition is switched off, the vehicle stops transferring data on the CAN, so after 30 sec also the measurement system will power down.

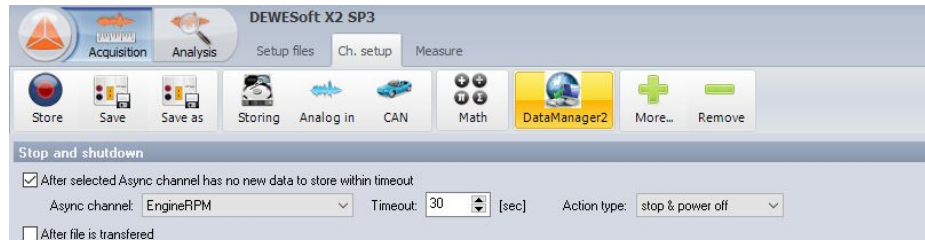


Illustration 7: Async-Channel

It is also possible to *stop & shutdown* the system after all files are transferred, when the option “After file is transferred” is checked.

## 3 Multifile Example

The Data Manager Plugin works also with Multifiles, *during* a running measurement.

### 3.1 Local / Network

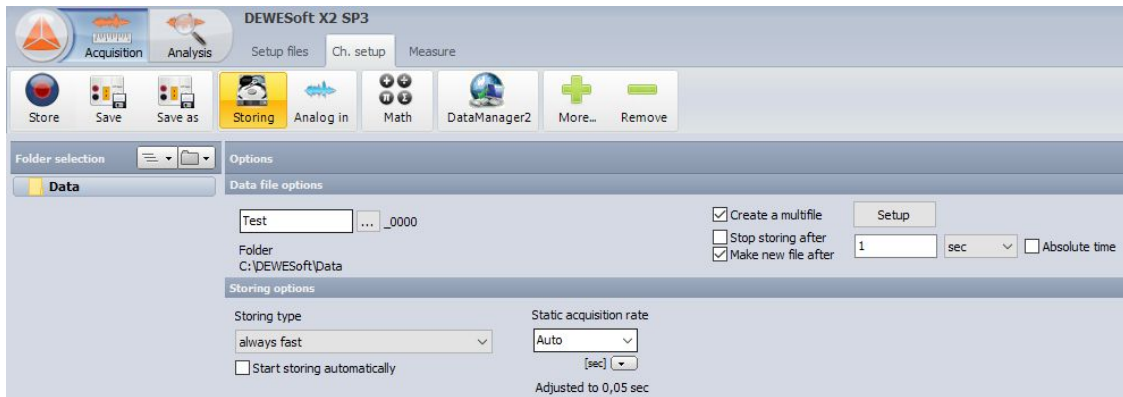


Illustration 8: Multifile – Storing Settings

Go to the “*Storing*” section and choose a name for the stored files.

Make sure the options “*Create a multifile*” and “*Make new file after*” are activated. Also set the time period to e.g. 1 second (for this test).

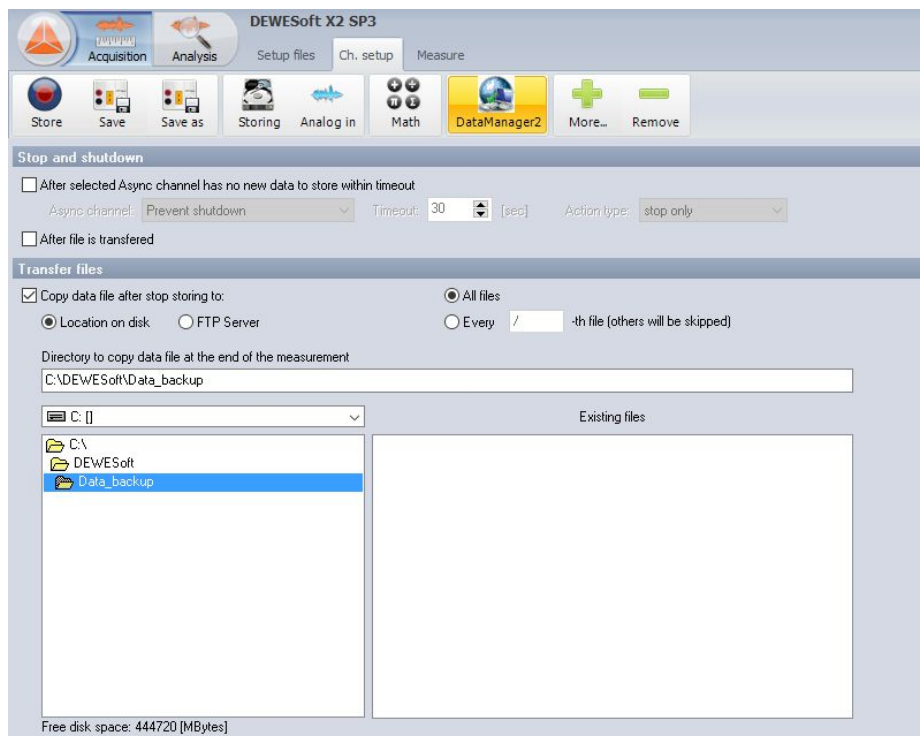
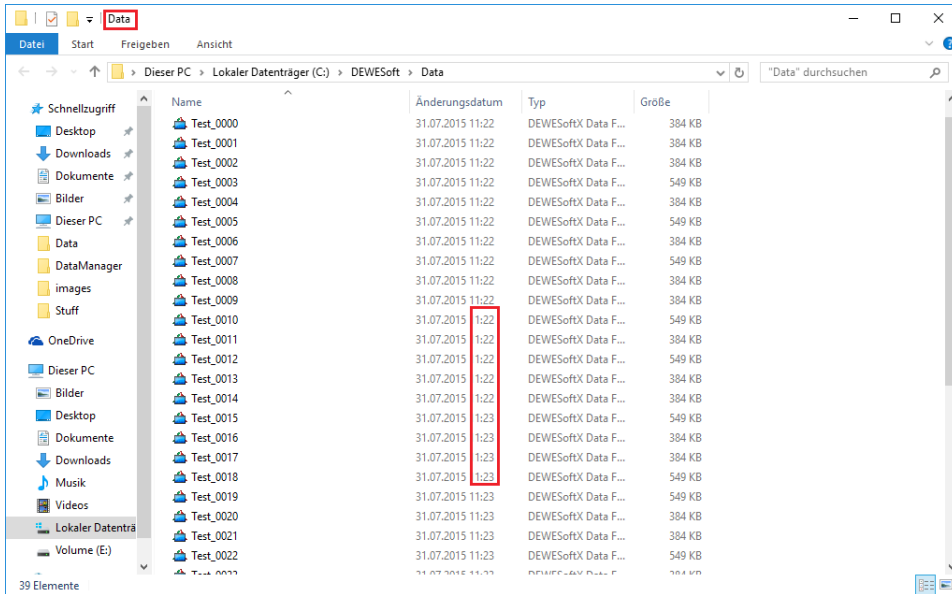


Illustration 9: Multifile – DataManager Settings

Select the path where the duplicated files should be saved. For example create a new folder called “*Data\_backup*” in `C:\DEWESoft\`. The files can also be saved on another network storage/server.



Run a short test and check if the File Transfer works.



Multifile – Data Folder

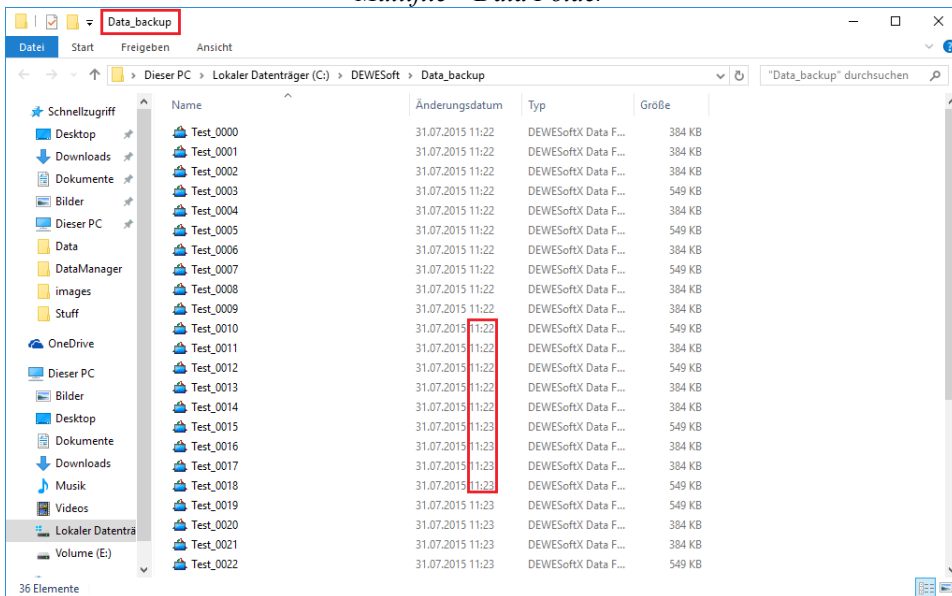
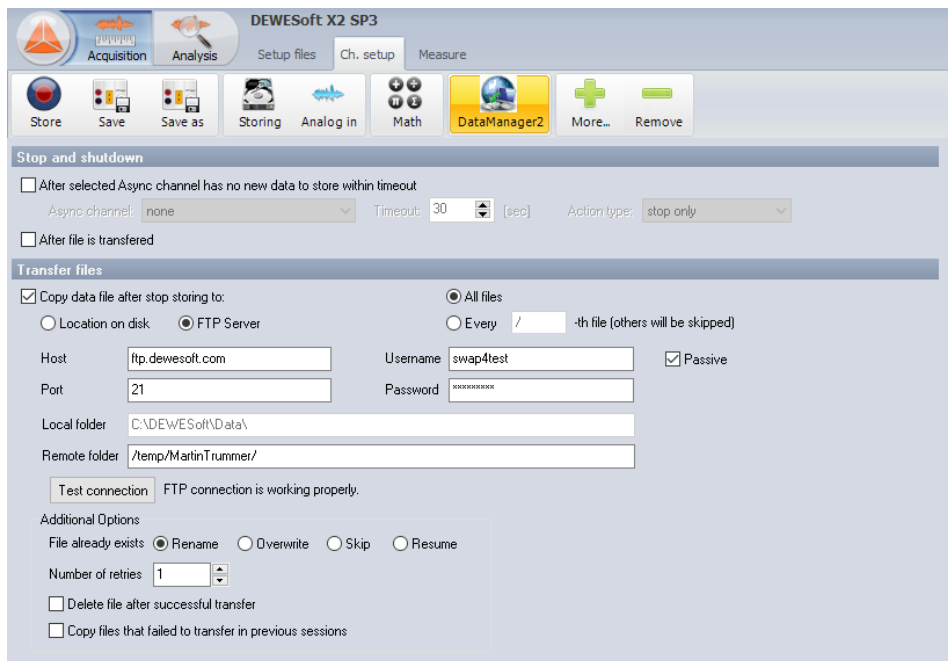


Illustration 10: Multifile – Data\_backup Folder

Check the two folders “Data” and “Data\_backup” and you will find the same files of “Data” in “Data\_backup” (Compare the times of the files (red marked), they are exactly the same, so Multifile during measurement works well with the Data Manager Plugin)

## 3.2 FTP-Server

You can also use the Data Manager with Multifile to copy files to a ftp-server.



*Illustration 11: Multifile – FTP Server*

Fill in all the data and make sure the FTP connection is working properly while clicking at “*Test connection*”.

If some files already exist, choose between *rename*, *overwrite*, *skip* and *resume*.

(If the connection does not work, activate “*Passive*” and retry the “*Test connection*”! *This often solves the issue.*)

## 4 Backup opportunities

### 4.1 Network Area

It is possible to save all data of e.g. 3 DS-NET's on the same FTP-Server.

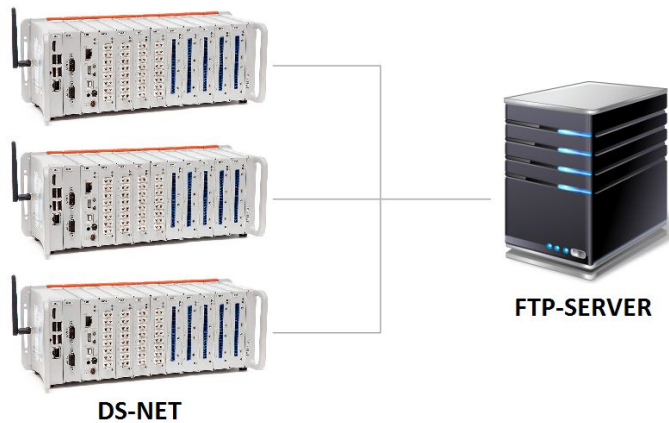


Illustration 12: DS-NET - FTP-Server

### 4.2 USB-Stick / External Hard Drive

Save all data local on an USB-Stick or External Hard Drive.

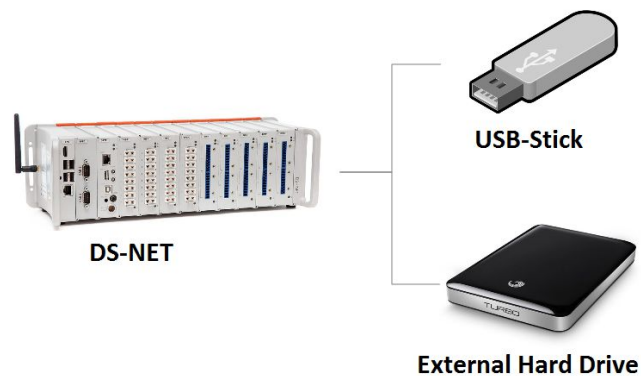


Illustration 13: DS-NET – Stick/External Drive


## 5 FAQ


This section should help to find quick solutions for known problems.

### 5.1 What is the difference between *shutdown* and *power off*?

It is exactly the same on modern operating systems.

At older systems:

 *Power off* = the systems shuts down instantly and turns the power off

 *Shutdown* = after all running processes have stopped, the system shuts down

We recommend to use always "*Power Off*"!

## 6 Version History

### 6.1 Plugin Version

Plugin-Version	Date [dd.mm.yyyy]	Notes
2.10	22.10.14	Current version of the plugin

### 6.2 Documentation Version

Revision number: 71

Last modified: Mon 03 Aug 2015, 17:17

Doc-Version	Date [dd.mm.yyyy]	Notes
1.0	03.08.15	initial revision for plugin version 2.10