




## Table of Contents

1 Installation.....	1
1.1 Download.....	1
1.2 Compatibility.....	1
1.3 Licensing.....	1
1.3.1 Requesting an Evaluation license.....	1
1.3.2 Activating the Evaluation license.....	2
1.4 Plug-in Installation.....	2
2 SendMail Plugin operation.....	4
2.1 Setting up the alarm.....	4
2.2 E-Mail on alarm.....	5
2.3 SMS on alarm.....	6
3 Measurement.....	8
3.1 E-Mail example.....	9
3.2 SMS example.....	9
4 FAQ.....	10
5 Version History.....	12
5.1 Plugin Version.....	12
5.2 Documentation Version.....	12

# 1 Installation

## 1.1 Download

 DEWESoft® homepage (<http://www.dewesoft.com>)

you can download DEWESoft® plugins when you go to: [Downloads](#) - [Plugins](#)

## 1.2 Compatibility

The plugin is compatible with DEWESoft® 7.0.5, 7.1 and DEWESoft® X.

It has been tested on Windows 7 (32-bit and 64-bit).

## 1.3 Licensing

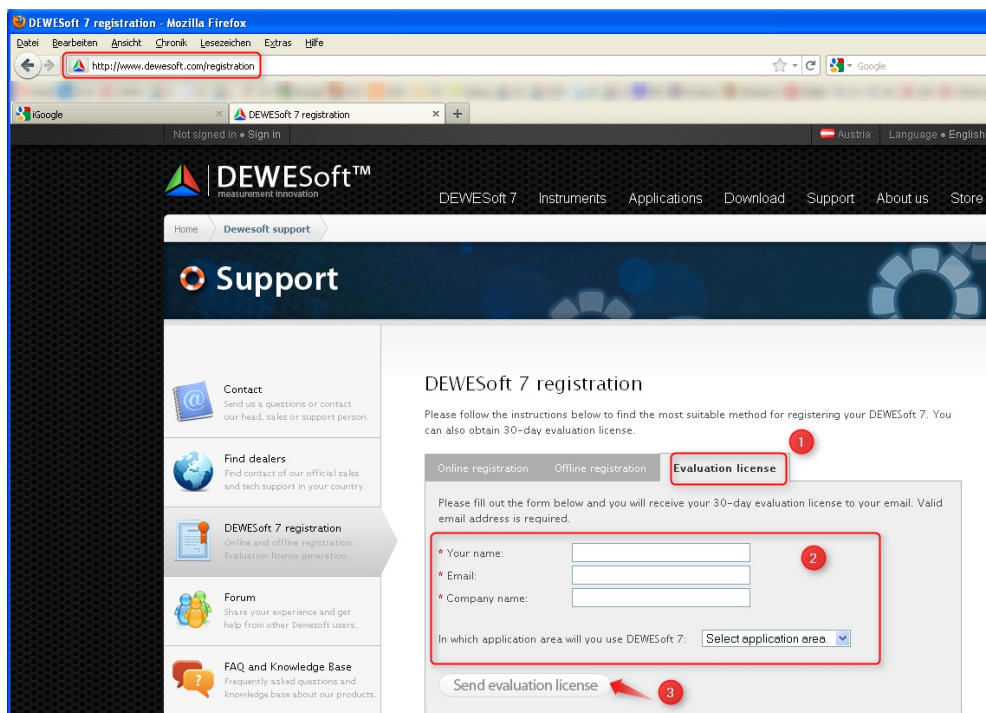
In DEWESoft an additional license for the plugin is needed, it can also be written into the Dewesoft device.

The plugin requires a valid DEWESoft® license.

To test the plugin you can use a *30-days-Evaluation license*.

### 1.3.1 Requesting an Evaluation license

You can request an an *Evaluation license* from our homepage: <http://www.dewesoft.com/registration>



*Illustration 1: Request Evaluation License*

- (1) Click on Evaluation license
- (2) Fill out all the required fields
- (3) Click the **Send evaluation license** button

## 1.3.2 Activating the Evaluation license

When you have received your trial licence key, open DEWESoft®, go to **Settings - Hardware Setup...**, select the **Registration** tab sheet and enter the license code (if you already have other licenses, you may need to click the **Create** button).

Now enter the license code and click the **Register online** button.

Then your new license key will show up in the list and should have the **Status Valid**.

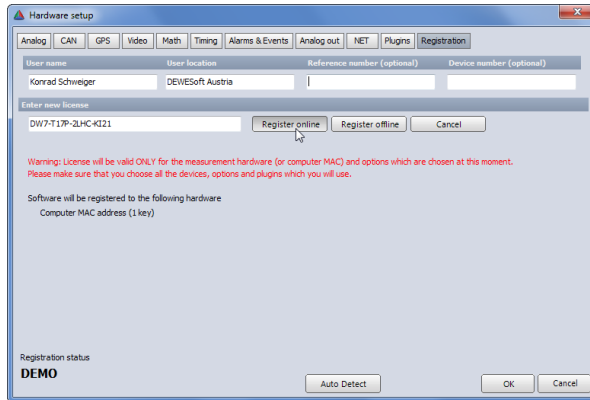


Illustration 2: Enter license key

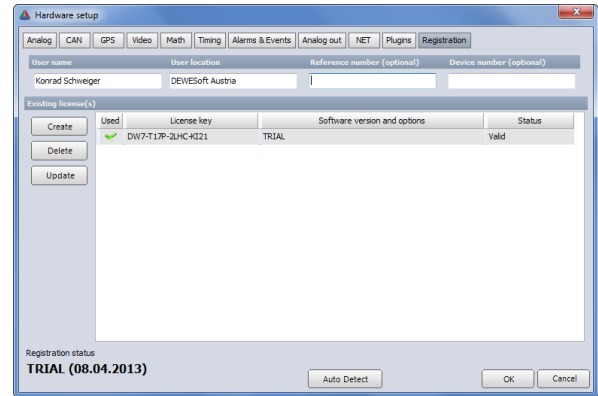


Illustration 3: Valid trial license

## 1.4 Plug-in Installation

The file SendMail\_V2.0.0.zip contains three files (SendMail.dll, libeay32.dll, ssleay32.dll). Please copy all files into the **Addons** folder of your DEWESoft® installation. (e.g. D:\DEWESoft7\Bin\v7\_1\Addons\), then start DEWESoft®.

Go to **Settings → Hardware Setup → Plugins** and set the plugin to **Used**.

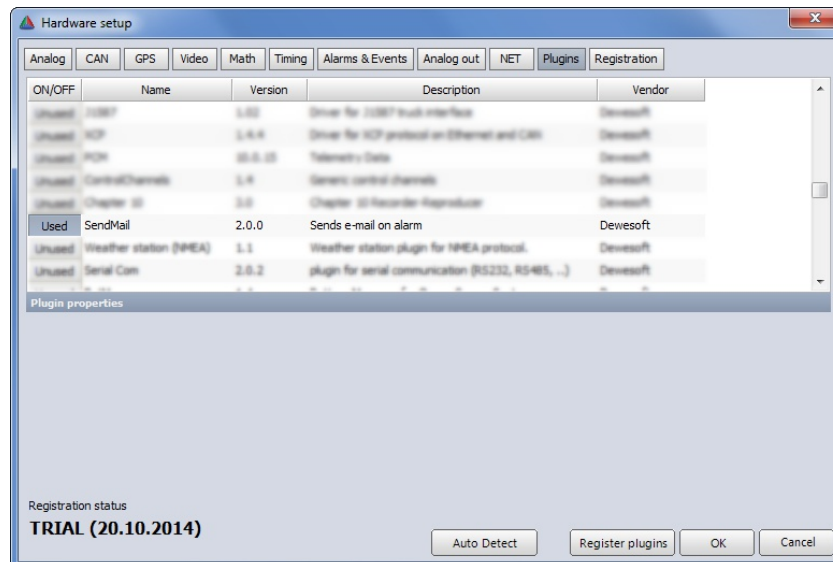


Illustration 4: Enable Plugin in Hardware Setup

### HINT



When you are using Windows® 7, then you must click the **Register plugins** button (at the bottom of the Hardware setup dialogue) once and restart DEWESoft® before the plugin shows up in the list of available plugins.

## 2 SendMail Plugin operation

The SendMail plugin will send an e-mail to one or more recipients, if an Alarm appears. Multiple alarm constraints can be specified, resulting in different text sent per mail (e.g. “Temperature Sensor 1 too high!”).

### 2.1 Setting up the alarm

If the Alarms icon is not shown, please go to Settings → Hardware setup → Alarms & Events and activate the checkbox “Enable alarm monitoring”.

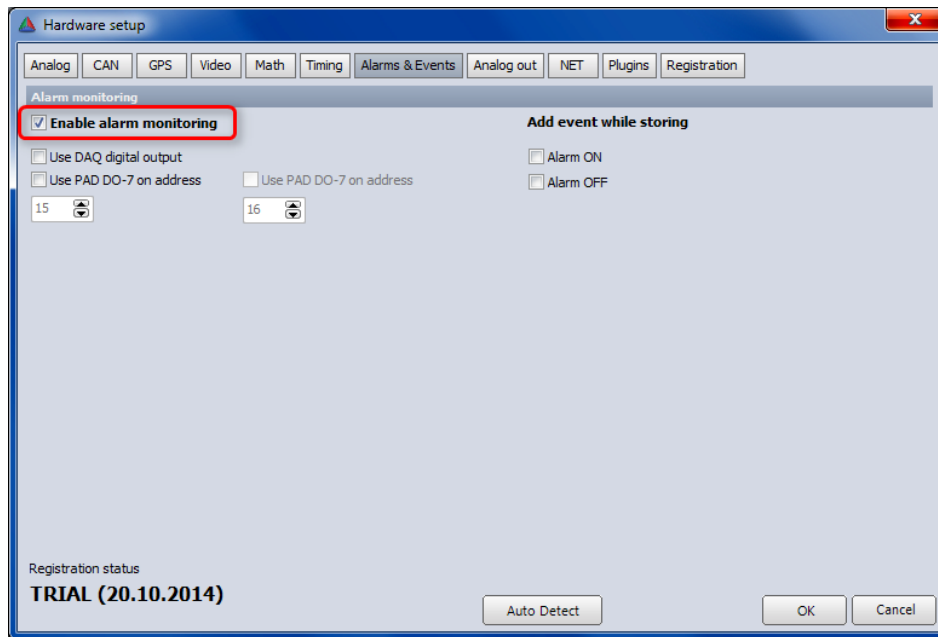


Illustration 5: Enabling Alarms

Go to the “Alarms” section. In this example we will start the alarm when the value on channel “temperature” will exceed 29 deg C. We rename the alarm to “Temperature too high!!”, as this will also be the mail subject. Here the alarm has to be reset manually. You can also specify more different alarms with different texts.

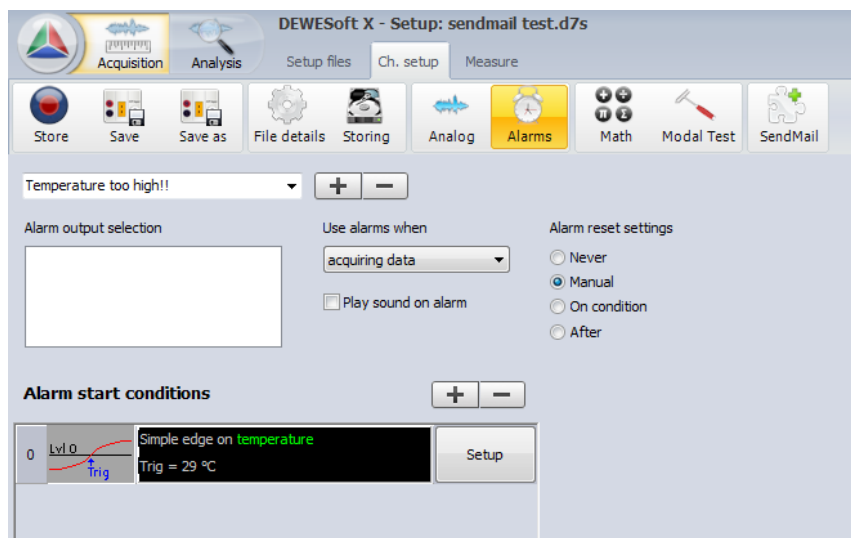
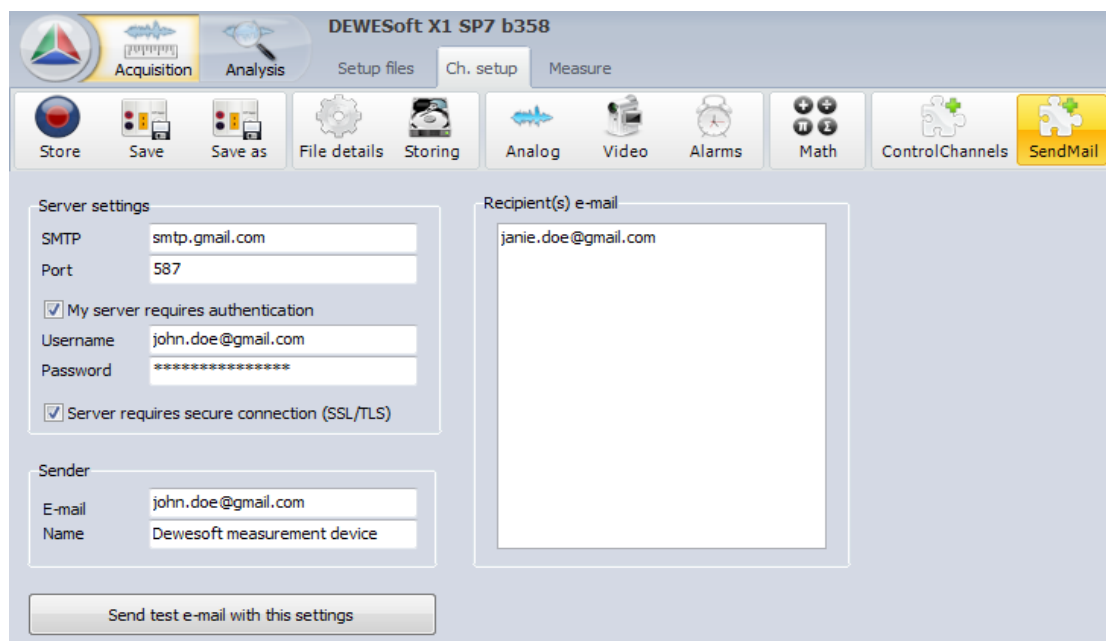


Illustration 6: Alarm setup

## 2.2 E-Mail on alarm

You have to know SMTP and Port settings of your mail provider, usually you can easily browse them in the internet. Enter your Mail login (Username and Password). Under “Sender” you can specify the displayed mail address. If you have multiple measurement stations, you can enter a unique identifier in the field “Name”. On the right side you have space for a list of recipient mail addresses.



*Illustration 7: SendMail Plugin E-Mail setup*

Check your settings by using the “Send test e-mail with this settings” button. If it's not working in the first place, check the authentication method used by your mail server.

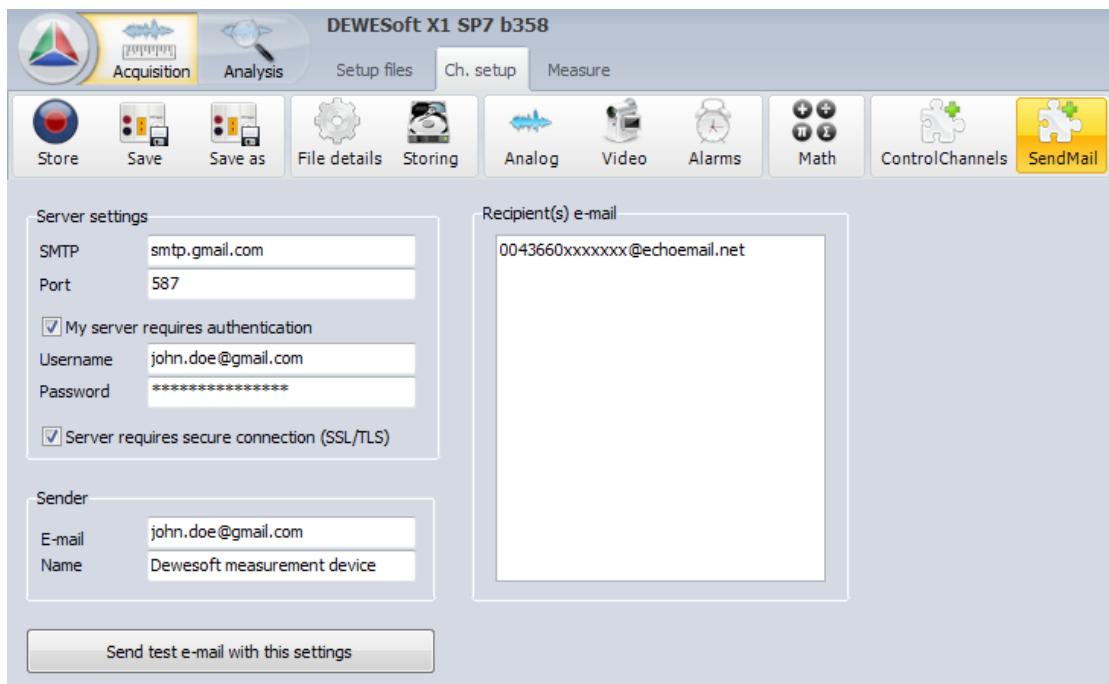
## 2.3 SMS on alarm

By the use of a so-called “e-mail to SMS” service (gateway), you can send an e-mail to a special address, which converts to and sends the text as an SMS.

We will show here an example by using [www.esendex.de/](http://www.esendex.de/), which works international, as well as offers monthly payment or a prepaid service (where you can e.g. buy an amount of 200 SMS before).

You have to register with a valid e-mail address and phone number.

When this link is done, a new e-mail address is created consisting of [phonenumber@echoemail.net](mailto:phonenumber@echoemail.net). Just use this as recipients e-mail, the rest of the settings stays the same.



*Illustration 8: SendMail Plugin SMS setup*

### 3 Measurement

Go to Measure mode and notice the green “Alarm OFF” button on top.

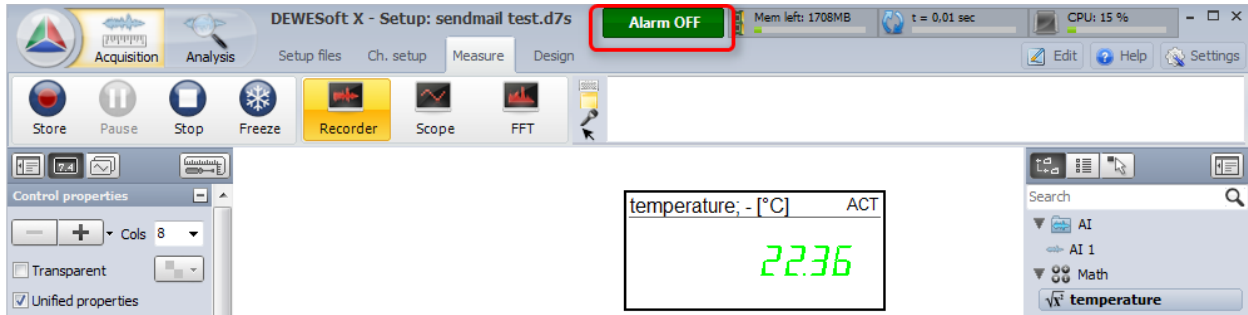


Illustration 9: Alarm OFF

Increase the temperature on the sensor. The button will change to red, showing “Alarm ON”. The SendMail plugin will send an e-mail (or SMS) in the background.

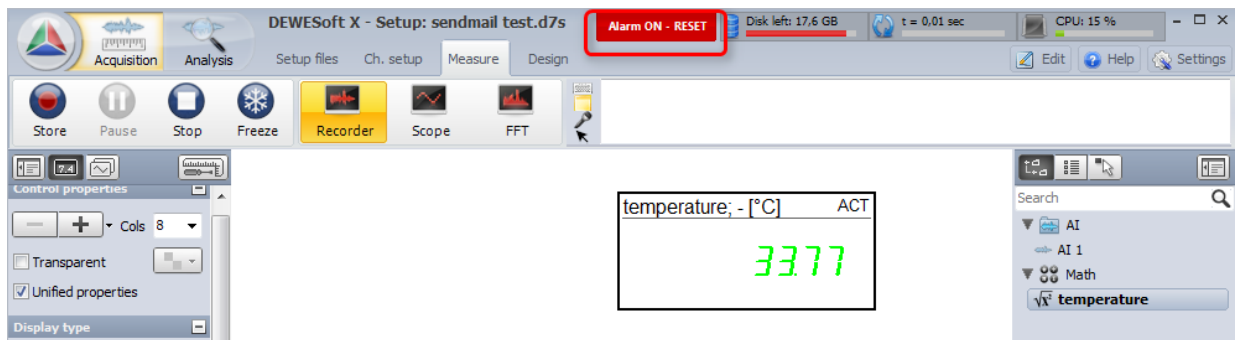


Illustration 10: Alarm ON





## 4 FAQ

This section should help to find quick solutions for known problems.

## 5 Version History

### 5.1 Plugin Version

Plugin-Version	Date [dd.mm.yyyy]	Notes
2.0.0	18.06.14	

### 5.2 Documentation Version

Revision number: 25

Last modified: Wed 07 Jan 2015, 16:36

Doc-Version	Date [dd.mm.yyyy]	Notes
1.0.0	23.09.14	initial revision for plugin version 2.0.0
1.1.0	07.01.15	Added email-to-sms example