

Table of Contents

1	About this document.....	1
1.1	Legend.....	1
1.2	Links.....	2
1.3	Platform.....	2
1.4	Compatibility.....	2
1.5	Files and Directories.....	2
1.5.1	Important DEWESoft® 7 Directories.....	2
1.5.1.1	DEWESoft Measurement Unit [recommended].....	3
1.5.1.2	Windows Standard.....	3
1.6	Licensing.....	4
1.6.1	Requesting an Evaluation license.....	4
1.6.2	Activating the Evaluation license.....	4
1.7	Plug-in Installation.....	5
1.7.1	Registering the AddOn.....	5
1.8	Input Fields.....	6
1.8.1	Input Confirmation.....	6
1.8.2	Input Warnings/Errors.....	6
2	AddOn Settings.....	7
2.1.1	Log files.....	7
2.1.1.1	Log levels.....	7
2.1.2	Toolbar.....	8
2.1.3	Search-box.....	8
2.1.4	Directory Definitions: Grid.....	8
2.1.4.1	Header pop-up.....	9
2.1.4.2	Multi select.....	9
2.1.4.3	Directory Definition Dialogue.....	9
2.1.4.4	Directory.....	10
2.1.4.5	Custom File Extensions.....	10
3	Channel Setup.....	11
4	Version History.....	12

1 About this document

This is the user documentation for DEWESoft® File Cleaner AddOn Version 1.0.2.

The AddOn can be configured to automatically delete old files in definable directories.

CAUTION



This AddOn will delete files from your hard-drive and can cause permanent data loss!
Use with great care and make sure to get the configuration right.

1.1 Legend

The following symbols and formats will be used throughout the document.

IMPORTANT



Gives you an important information about a subject.
Please read carefully!

HINT



Gives you a hint or provides additional information about a subject.

EXAMPLE



Gives you an example of a specific subject.

Example	Meaning	Description
Cancel	Button	a button that you can click
<i>File</i>	Menu Item	a menu item, will open a sub menu or a dialog
<i>Times New Roman</i>	List Item	an item in a list (or tree) that you can select
Events	Tab Sheet	a tab sheet that you can select
C:\Program Files\OpenOffice.org 3\readme.txt	File Path and Name	a file name or path
<i>Windows Key</i>	a term	any kind of term (maybe also compound)

Table 1: Layout formats used in the documentation

1.2 Links

 DEWESoft® homepage
<http://www.dewesoft.com>

you can download DEWESoft® AddOns when you go to: [Support](#) - [Downloads](#) - [AddOns](#)

1.3 Platform

Since version DEWESoft® X3 you can choose to install DEWESoft® [32-bit](#) or [64-bit](#). All previous versions (X2, X1, etc.) only supported [32-bit](#).

HINT



Note, that the [64-bit](#) DEWESoft® version also needs [64-bit](#) versions of the AddOns. At the time of writing this documentation not all AddOns are available as [64-bit](#) version and some older AddOns may never be converted.

If you are not sure which DEWESoft® version you have installed, you can easily see it in the *About* dialogue:

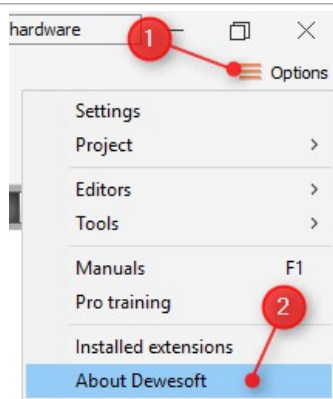


Illustration 1: Open the About dialogue

When the DEWESoft® version ends with (64-bit) then you have the [64-bit](#) version, otherwise it is the [32-bit](#) version.

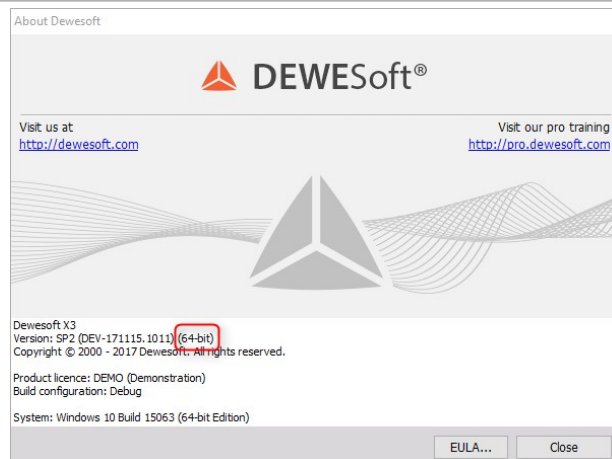


Illustration 2: About dialogue 64-bit

1.4 Compatibility

The AddOn requires at least DEWESoft® X2. It is compatible with DEWESoft® X3 [32-bit](#) or [64-bit](#).

1.5 Files and Directories

The actual location of the directories on your computer may vary dependant on your computer's locale settings and the settings you chose when installing DEWESoft®.

1.5.1 Important DEWESoft® 7 Directories

The following tables show the default paths of your DEWESoft® installation. Note, that the paths may be different, depending on your operating system, DEWESoft® version and language settings.

1.5.1.1 DEWESoft Measurement Unit [recommended]

Name	Explanation	Platform	Default path
Bin	Contains DEWESoftX.exe	32-bit	D:\DEWESoft\Bin\X3
		64-bit	D:\DEWESoft\Bin64\X3
AddOns	The files for AddOns (.dll, mth) must be copied into this directory	32-bit	D:\DEWESoft\Bin\X3\AddOns
		64-bit	D:\DEWESoft\Bin64\X3\AddOns64
Data	Folder for the measurement data files		D:\DEWESoft\Data
Setups	Folder for the setup files		D:\DEWESoft\Setups
System	Folder for the project files		D:\DEWESoft\System\X3
Log	Folder for the log files		D:\DEWESoft\System\X3\Logs

The paths may be different depending on your DEWESoft® version.

1.5.1.2 Windows Standard

Name	Platform	Default path
Bin	32-bit	C:\Programme\DEWESoft\Bin\X3
	64-bit	C:\Programme\DEWESoft\Bin64\X3
AddOns	32-bit	C:\Programme\DEWESoft\Bin\X3\AddOns
	64-bit	C:\Programme\DEWESoft\Bin64\X3\AddOns64
Data		C:\Dokumente und Einstellungen\All Users\Dokumente\DEWESoft\Data
Setups		C:\Dokumente und Einstellungen\All Users\Dokumente\DEWESoft\Setups
System		C:\Dokumente und Einstellungen\All Users\Dokumente\DEWESoft\System\X3
Log		C:\Dokumente und Einstellungen\All Users\Dokumente\DEWESoft\System\X3\Logs

The paths may be different depending on your DEWESoft® version and the language of your operating system.

1.6 Licensing

The AddOn is free of charge. You do however need a valid DEWESoft® license (You can use an *Evaluation license* for testing).

1.6.1 Requesting an Evaluation license

You can request an an *Evaluation license* from our homepage:

<http://www.dewesoft.com/registration>

- (1) Click on **Evaluation license**
- (2) Fill out all the required fields
- (3) Click the **Request license** button

The screenshot shows a web browser window with the URL www.dewesoft.com/registration#evaluation-license. The page title is 'Evaluation license'. On the left, there are three menu items: 'Online registration', 'Offline registration', and 'Evaluation license', with the last one highlighted. The main content area contains a form with the following fields: 'Name' (text input with placeholder 'Your Name here'), 'Company' (text input with placeholder 'Your Company here'), 'Country' (dropdown menu with 'Austria' selected), 'Email' (text input with placeholder 'your.email@here.com'), and 'Application' (dropdown menu with 'Select application area...'). A red asterisk is next to each field label. Below the form is a yellow 'Request license' button. To the right of the form, there is a paragraph: 'To receive a fully functional 30-day evaluation license for Dewesoft software fill and submit the form below. Data marked with * is required. Please provide valid email address where we can send you the evaluation license.'

Illustration 3: Request Evaluation License

1.6.2 Activating the Evaluation license

When you have received your trial licence key, open DEWESoft®, go to **Settings - Hardware Setup...**, select the **Registration** tab sheet and enter the license code (if you already have other licenses, you may need to click the **Create** button).

Now enter the license code and click the **Register online** button.

Then your new license key will show up in the list and should have the *Status Valid*.

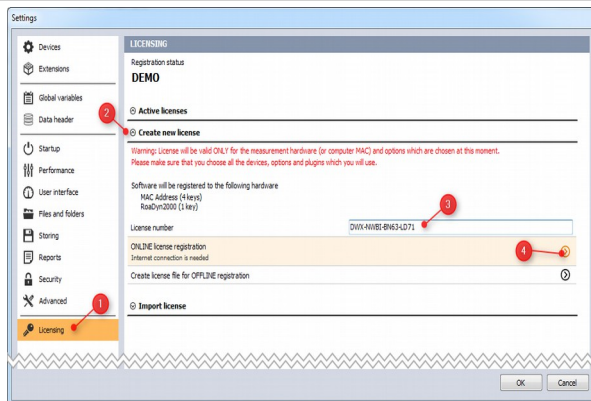


Illustration 4: Enter license key

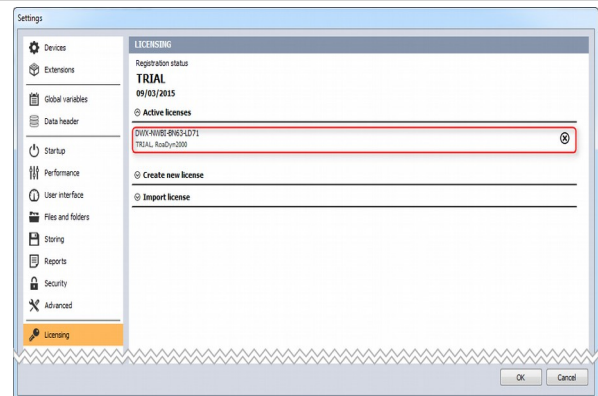


Illustration 5: Valid trial license

1.7 Plug-in Installation

Make sure to use the correct file for your platform (see 1.3 Platform on page 2):

Platform		AddOn file	Example of AddOns Folder
32-bit	Copy the file:	FileCleaner.dll	to D:\DEWESoft\Bin\X3\AddOns
64-bit		FileCleaner64.dll	to D:\DEWESoft\Bin64\X3\AddOns64

Then you can start DEWESoft® and register the AddOn (aka. Extension). Click *Options - Settings...*, select *Extensions* and click the plus sign. Then find the *File Cleaner* AddOn in the list and activate it (i.e. click the check-box 1 in Illustration 6) - when the AddOn does not show up in the list, you may need to register it first (see 1.7.1 Registering the AddOn on page 5)

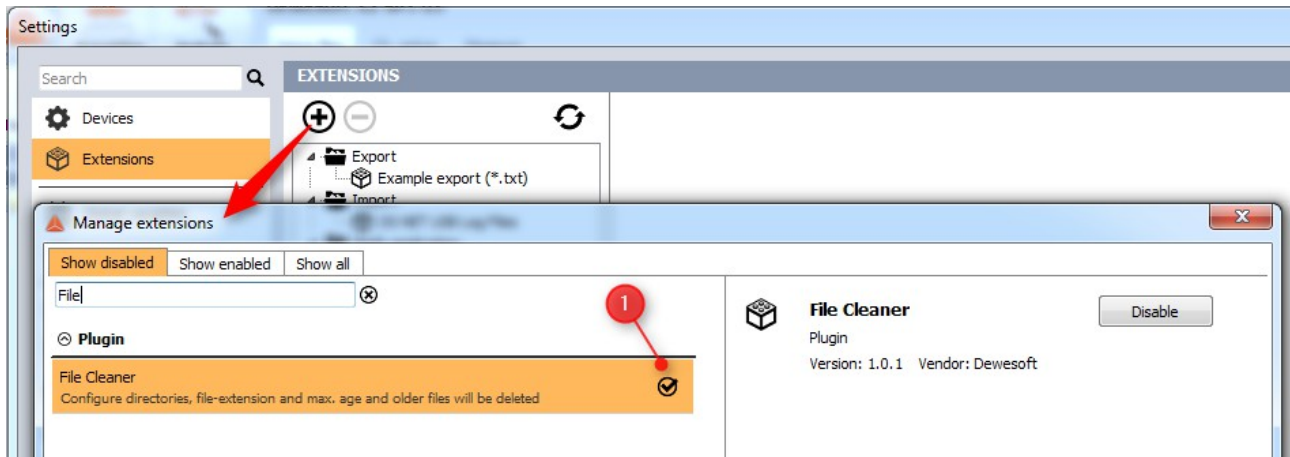


Illustration 6: Enable Extension

1.7.1 Registering the AddOn

Before you can use *AddOns* in DEWESoft®, they must be registered once.

When DEWESoft® is started it will try to register all AddOns (dll files) that it finds in the *AddOns* folder. But in order to do that, DEWESoft® requires administrator permissions (because it must write to the Windows® registry). When DEWESoft® is not started with administrator permissions, the registration cannot be done automatically.

When the AddOn does not show up in the *Extensions* list, you must press the **Refresh** button (see 2 in Illustration 7).
 Note: you may need to start DEWESoft® as administrator (depending on the UAC settings of your Windows user/installation).
 Also make sure that you use the correct *dll* file for your platform (**32-bit** or **64-bit**): see 1.3 Platform on page 2

When you have pressed the **Refresh** button, then you will see the registration Window in Illustration 8 for a short time. After that, you must restart DEWESoft®.

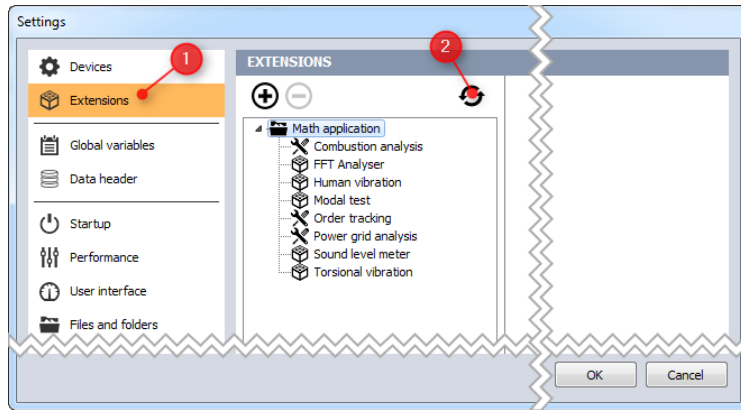


Illustration 7: Extensions: Refresh button

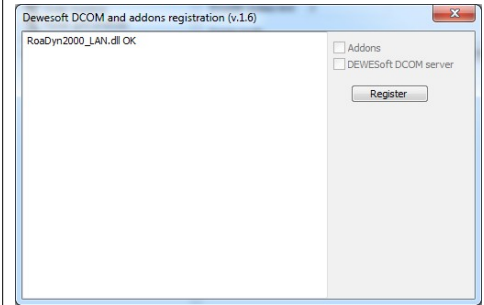


Illustration 8: Registration Window

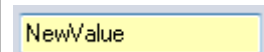
1.8 Input Fields

1.8.1 Input Confirmation

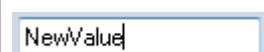
When you change the value of an input field, the background colour of the input field will turn yellow to indicate that you have changed something and that this change has not been confirmed yet.

Your input will automatically be confirmed when set the focus to another input field (i.e. by clicking with the mouse or by pressing the **Tab** key).

You can also press **Return** to manually confirm your change.



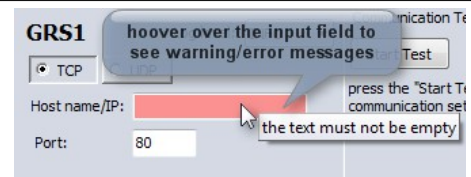
After the input has been confirmed the background colour of the input field will be white again (or **red/orange**, when there are **errors/warnings**).



1.8.2 Input Warnings/Errors

An invalid input may cause a **warning** and **error**.

Warnings will be highlighted in **orange**, **errors** in **red**. When you hover over the input field you will see a hint with a detailed description of what is wrong:



2 AddOn Settings

After you have installed the AddOn (see 1.7 Plug-in Installation), start DEWESoft® and go to **Options – Settings...**:

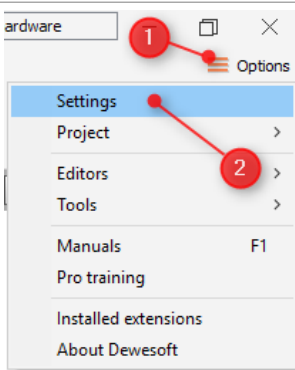


Illustration 9: Settings

To open the *AddOn Settings* click on **Options – Settings...**.

Note: *Options* will be disabled during the measurement.

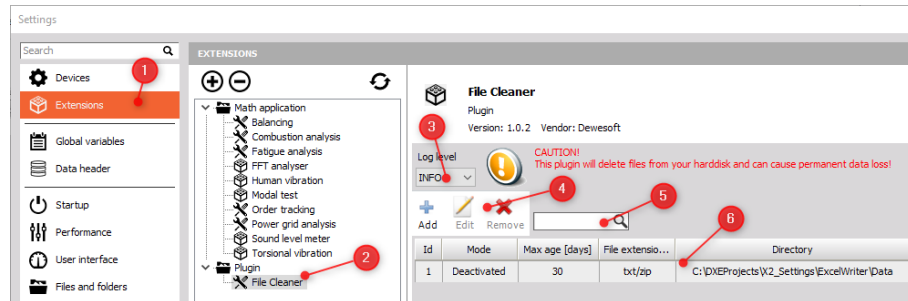


Illustration 10: AddOn Settings

- (1) Go to the **Extensions** section
- (2) In the *Extensions* section look for the node named *File Cleaner*¹ Now will see the settings of the AddOn at the right of the screen:
- (3) see 2.1.1 Log files on page 7
- (4) see 2.1.2 Toolbar page 8
- (5) see 2.1.3 Search-box page 8
- (6) see 2.1.4 Directory Definitions: Grid page 8

2.1.1 Log files

The AddOn will write log files during operation. The amount of log messages is configurable via the *Log level* drop down box in the *Hardware setup*. The name of the logfile is *FileCleaner.log*.

When the AddOn is started, it will immediately start to log to the windows temporary directory.

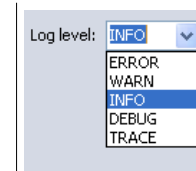
As soon as the DEWESoft® application is available to the AddOn, all subsequent logs will be written to the standard DEWESoft® log directory (e.g. D:\DEWESoft\System\X3\Logs).

Note: There is also a log file called *FileCleaner.dll.log* in the *AddOns* directory (see 1.5 Files and Directories). This will normally be empty. It will only contain messages when there is a bug very early in the AddOn initialization.

2.1.1.1 Log levels

With the *log level* drop down box you can set the detail level of the logging function.

If you set a high log level (e.g. *TRACE, ALL*) a lot of log messages will be written and the logfiles will roll over quite often. This is also dependent on the sample rate – the higher the sample rate is, the more often data will be fetched and thus more log messages will be written.



1 If you don't find it, see: 1.7 Plug-in Installation on page 5.




For production-use the log level *INFO* is recommended.

Log level	Description
<i>Error</i>	Will only log error messages
<i>Warn</i>	Will also log warning messages
<i>Info</i>	Will also log info messages – this is recommended for production use
<i>Debug</i>	Will also log debug messages
<i>Trace</i>	Will also log trace messages
<i>All</i>	Will log all messages

Table 2: Log Levels

2.1.2 Toolbar

The toolbar has the following buttons:

-  **Add:** Will add a new row with a directory definition to the grid (see also: 2.1.4.3 Directory Definition Dialogue on page 9).
-  **Edit:** Will open the Directory Definition Dialogue (see also: 2.1.4.3 Directory Definition Dialogue on page 9) for the Directory Definitions that are currently selected in the Directory Definitions: Grid.
Hint: you can also double click a row in the Directory Definitions: Grid to open the Directory Definition Dialogue.
-  **Remove:** Will remove the Directory Definitions that are currently selected in the Directory Definitions: Grid.

2.1.3 Search-box

If you enter a search term only the rows in the grid which contain this search term in any cell will be shown.

2.1.4 Directory Definitions: Grid

The Grid shows a list of all defined Directory Definitions (see: 2.1.4.3 Directory Definition Dialogue on page 9).

Column	Information
Id	This is just a unique consecutive number to identify the row of the grid. If there are any warnings or errors in this Directory Definition, then the background colour will turn orange or red.
Max age [days]	This is the maximum age (in days) of the files in the directory. Older files will be deleted by the AddOn. Note: the AddOn will only run once per day – thus it might take almost one day longer before your files are actually deleted.
File extension/s	Shows a list of all file-extensions that will be processed: i.e. only files with these extensions will be deleted (if they are older than <i>Max age [days]</i>).
Directory	This is the directory that will be processed: i.e. all files that are found in this directory and any of its subdirectories, that have one of the <i>File extension/s</i> and are older than <i>Max age [days]</i> will be deleted.
Subdirs	If subdirectories are also searched or not.

2.1.4.1 Header pop-up

When you right-click on the header row of the channel grid, you can specify which columns you want to see (i.e. show/hide columns) and you can also sort/unsort the grid by certain columns.

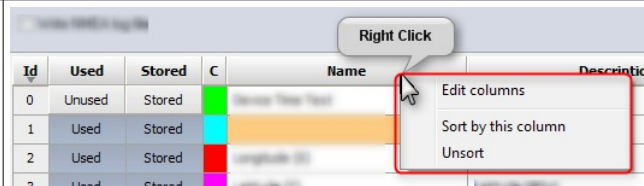


Illustration 11: Grid: Header Popup

2.1.4.2 Multi select

You can select and edit multiple rows at once.

1. left-click a cell and hold the mouse button
2. move the mouse (while still holding down the mouse button) to the target cell and then release the mouse button

The selected cells will now be surrounded by a black rectangle. When you now click into the selected region, you can change the Used status of all selected cells at once. Note: this does also work for text-columns: i.e. you can select several cells of the *Name* column and change all selected names at once.

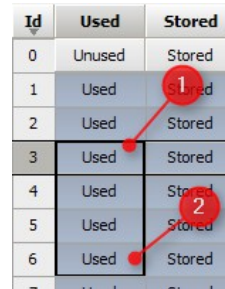


Illustration 12: Grid: Multi Select

2.1.4.3 Directory Definition Dialogue

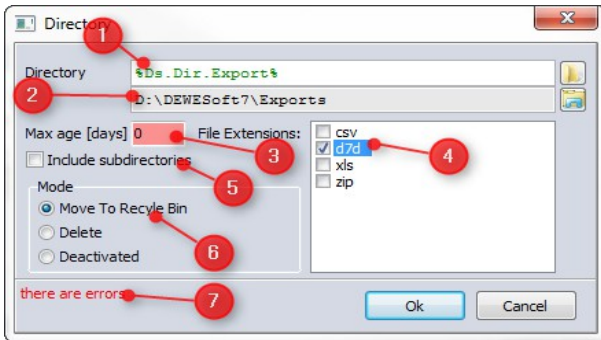


Illustration 13: Directory Definition Dialogue

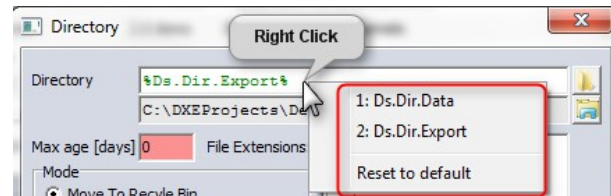





Illustration 14: Directory Popup



In the Directory Definition Dialogue you can define the criteria that will be used to delete files.

- (1) *Directory input*: Enter the directory path: see 2.1.4.4 Directory on page 10 for details
- (2) *Directory*: only files that are stored in this directory or any of it's subdirectories will be processed
- (3) *Max age [days]*: only files that are older (the file modification date is relevant) than the specified number of days will be processed
- (4) *File Extensions*: only files with one of the selected extensions will be processed: see also 2.1.4.5 Custom File Extensions on page 10
- (5) *Include subdirectories*: if this box is checked, also all subdirectories will be searched for matching files and also those files will be deleted.
- (6) *Mode*: the Mode defines the action that will be taken for the specified files:

-  **Move To Recycle Bin:** the specified files will not be deleted directly, but they are moved to the *Windows Recycle Bin*. This gives you an opportunity to recover accidentally deleted files and restore them to their original locations.
 Note that the *Windows Recycle Bin* does not guarantee that you can restore all files (i.e. if the *Recycle Bin* reaches its maximum size old files will be deleted automatically): **Please consult the Windows Help for details about the Recycle Bin feature.**
 -  **Delete:** the specified files will be deleted.
CAUTION: The files will be deleted immediately. There is no way to restore the files. Use with care!
 -  **Deactivated:** In this mode the Directory Definition will simply be ignored – no files are deleted or moved to the Recycle Bin. You can use this mode to temporarily disable a Directory Definition (it is also useful for debugging).
- (7) Status label: may show errors/warnings

2.1.4.4 Directory

In the directory input box you can either enter a full directory path (into the text-box (1) in Illustration 15) manually, or you can click on the *Select Directory* icon (see (4) in Illustration 15) to open a standard Windows folder selection dialogue. When you click the the *Open location in Windows Explorer* icon (see (5) in Illustration 15), a Windows Explorer will be opened and show the directory (the path that is shown in text-box (2) in Illustration 15). Instead of absolute paths, you can also use 2 DEWESoft® variables:

-  **Ds.Dir.Export:** will be expanded to point to the current DEWESoft® export directory.
 See also: 1.5.1 Important DEWESoft® 7 Directories on page 2
-  **Ds.Dir.Data:** will be expanded to point to the current DEWESoft® data directory.
 See also: 1.5.1 Important DEWESoft® 7 Directories on page 2

You can type the variables manually (they must be surrounded by percent signs) or you can right-click into the Directory input field, to bring up the pop-up menu (3). Then you can either click one of the pop-up menu items or press a number on the keyboard (e.g. 1 for the first item). Then the variable will be inserted at the cursor position of the Directory input field.

You can also append text to the variable: see Illustration 16

Note: when you enter an absolute path directly, then the result text-box will show the same text as the Directory input text-box: see Illustration 17.

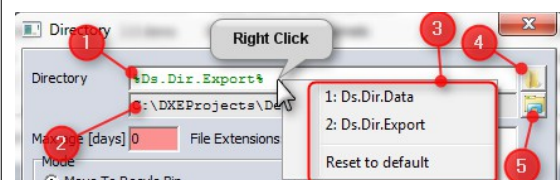


Illustration 15: Directory Variable

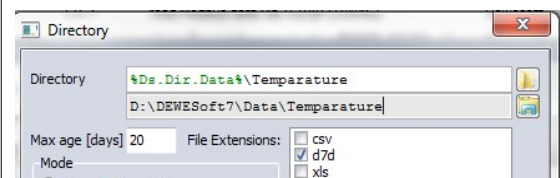


Illustration 16: Directory Variable Appended

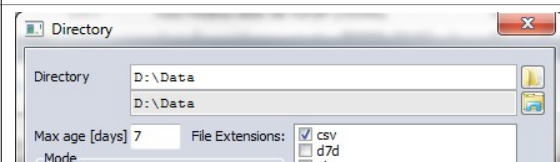


Illustration 17: Directory Full Path

2.1.4.5 Custom File Extensions

Per default you can select the following file extensions in the AddOn: *.csv, *.d7d, *.dxd, *.txt, *.zip

If you want to allow less or other file extensions, then you can specify a list of file extensions in the DEWESoft® Setup7.ini file. The Setup7.ini file is located in the DEWESoft® system folder (see also: 1.5.1 Important DEWESoft® 7 Directories on page 2):

e.g. D:\DEWESoft\System\X3\Setup7.ini

To specify a custom list of file extensions open the Setup7.ini file in a text-editor and add the following lines:

```
[FileCleanerAddOn]
```

```
Extensions=csv/d7d/xls
```

The first line is called the ini-file section. It is named FileCleanerAddOn and must be surrounded by square brackets.

The second line is a key-value pair. The name is Extensions followed by an equals sign (assignment operator) and the last part is the file-extension list. The extensions must be separated by a forward slash and must not include a dot (.).

In the example above only the file-extensions *.csv, *.d7d, *.xls will be available: see Illustration 18

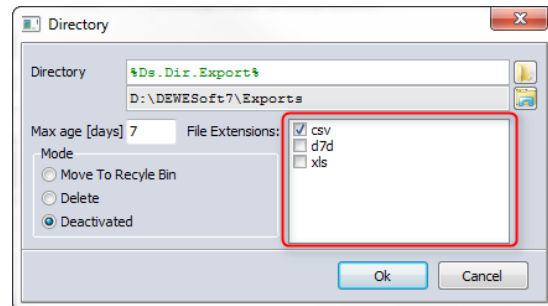


Illustration 18: 2.1.5.4 Custom File Extensions

HINT



Before you change the Setup7.ini file, you should close DEWESoft®.

3 Channel Setup

The File Cleaner AddOn does not have any channel related settings.

4 Version History

Revision number: 31

Last modified: Wed 10 Jan 2018, 16:01

AddOn Version	Date [dd.mm.yyyy]	Notes
1.0.0	07.10.2014	initial revision for AddOn version 1.0.0
1.0.1	02.05.2015	Added *.dxd as default extension
1.0.2	10.01.2018	updated doc for DEWESoft® X3 (including 64-bit version)