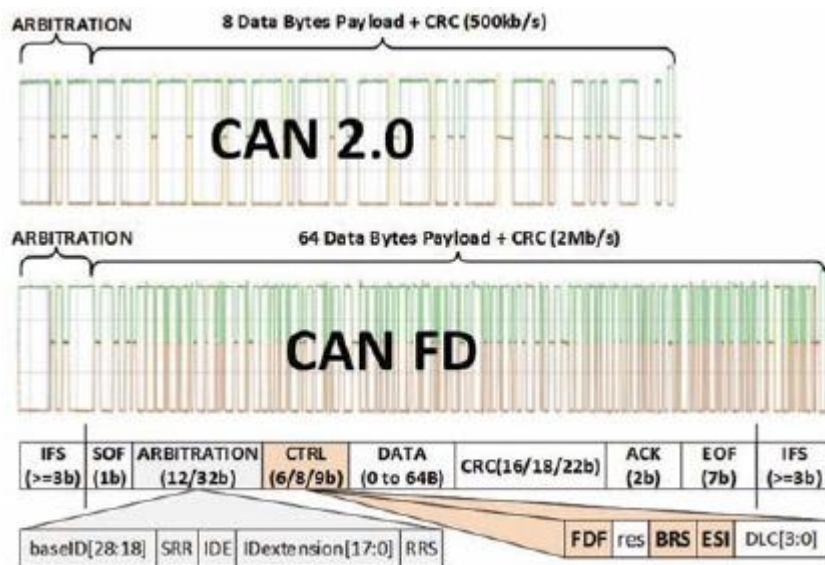




# CAN FD manual

Manual version: 1.0, Date: 25.9.2018



DEWESoft d.o.o.  
Gabrsko 11a, 1420 Trbovlje, Slovenia  
[www.dewesoft.com](http://www.dewesoft.com)

support@dewesoft.com



## Table of Contents

1. Revision history.....	1
2. General information.....	2
3. Licensing.....	2
4. Hardware setup.....	4
5. Channel setup .....	5

## Table of Figures

Figure 1 - Evaluation license .....	2
Figure 2 - License input .....	3
Figure 3 - Adding Vector HW .....	4

## Table of Tables

Table 1: revision history.....	1
--------------------------------	---

# 1. Revision history

*Table 1: revision history*

Revision	Plugin Version	Author	Date	Comment
1.0	X3 SP4	PG	25.9.2018	Initial document



## 2. General information

Currently only the following Vector hardware is supported in Dewesoft and can be used for CAN FD:

- VN1610
- VN1611
- VN1630
- VN1640
- VN7600
- VN7610

### Minimum DEWESoft version: X3 SP4

Latest Vector drivers need to be installed and computer rebooted, before Vector HW can be used with Dewesoft.

[https://vector.com/vi\\_downloadcenter\\_en.html](https://vector.com/vi_downloadcenter_en.html)

## 3. Licensing

The plugin requires a valid DEWESoft® CAN FD license. To test the plugin, you can use an Evaluation license.

### 3.1. Requesting an Evaluation license

You can request an Evaluation license from our homepage on the following [LINK](#).

1. Click on Evaluation license
2. Fill out all the required fields
3. Click the Request license button

The screenshot shows a web browser window with the URL <https://www.dewesoft.com/registration#evaluation-license>. The page title is "Evaluation license". Below the title, there is a small text block: "To receive a fully functional 30-day evaluation license for Dewesoft® software, fill out and submit the form below. Data marked with an asterisk (\*) is required. Please provide a valid email address to which we can send the evaluation license." The form contains the following fields:

- License \* (Dropdown menu, selected: DEWESoft X)
- Firstname \* (Text input, placeholder: Your name...)
- Lastname \* (Text input, placeholder: Your surname...)
- Company \* (Text input, placeholder: DEWESoft d.o.o.)
- Country \* (Dropdown menu, selected: Slovenia)
- Email \* (Text input, placeholder: Valid email address...)
- Phone \* (Text input, placeholder: Contact phone...)
- Application \* (Dropdown menu, selected: Automotive)

At the bottom of the form is a blue button labeled "Request license".

Figure 1 - Evaluation license



## 3.2 Activating the Evaluation license

When you have received your trial licence key, open DEWESoft®, go to **Options** → **Settings**, select **Licensing** and expand the **Create new license** section. Enter the license code (3) and click the Register online (4) button. Then your new license key will show up in the list and have the *Status Valid*.

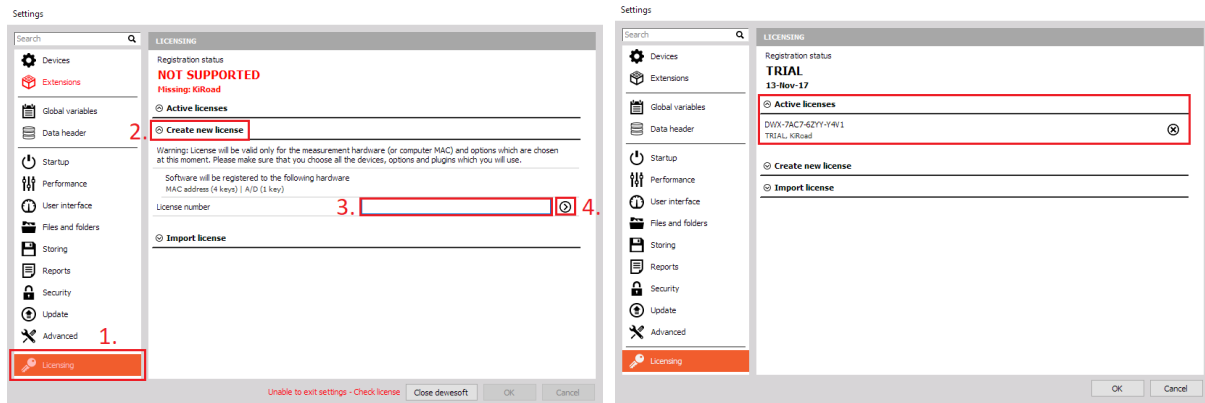


Figure 2 - License input



## 4. Hardware setup

In hardware settings of Dewesoft, Vector hardware needs to be added:

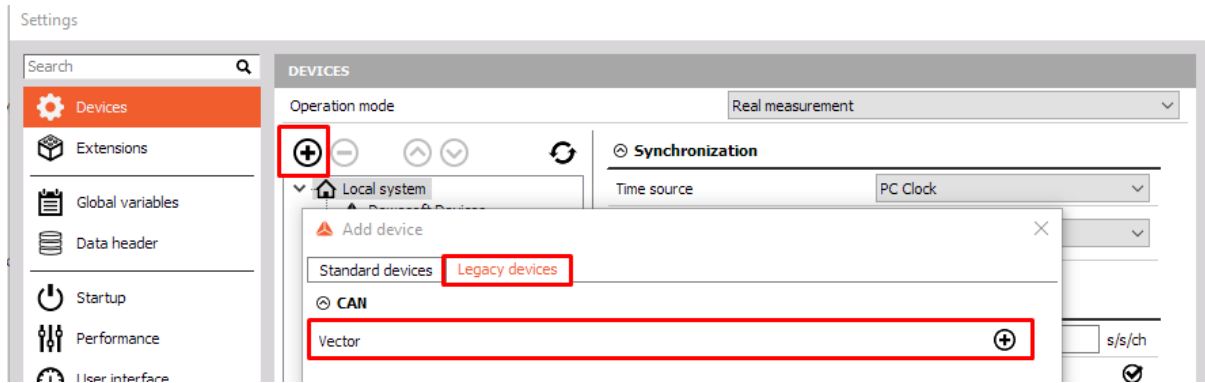


Figure 3 - Adding Vector HW

If the driver is installed and correct version of Dewesoft used, the device will appear in the device list and it will display CAN FD next to it.

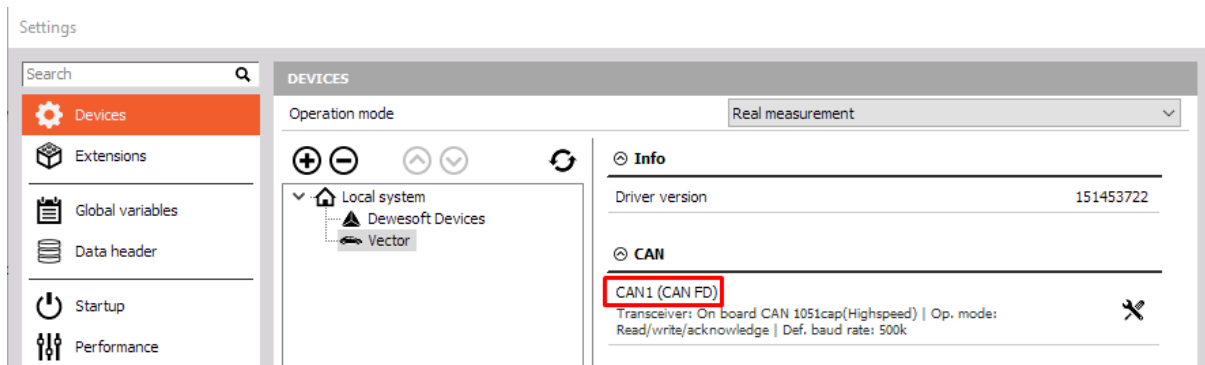


Figure 4 - Device list

Operation mode can be changed in the hardware settings of Dewesoft from Read only to Read/write/acknowledge (often required also for reading only).

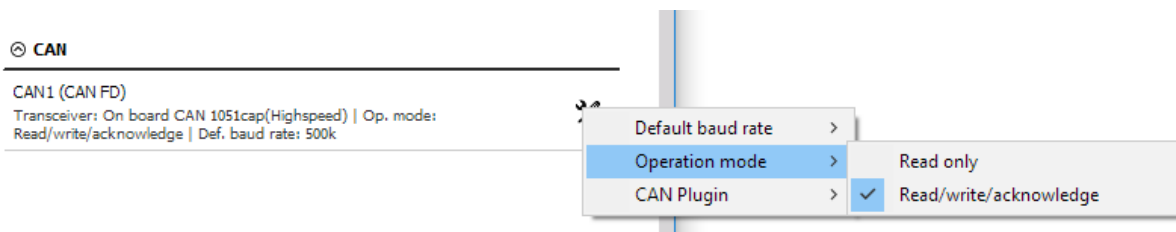


Figure 5 - Operation mode



## 5. Channel setup

Usage of CAN FD is exactly the same as CAN. To enable CAN FD, the checkbox next to it needs to be ticked.

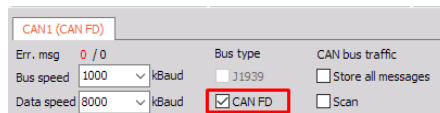


Figure 6 - Enable CAN FD

There are two main differences with CAN FD compared to CAN:

Message length is increased from 8 byte → 64 byte and data rate is increased up to 8 Mbit/s.

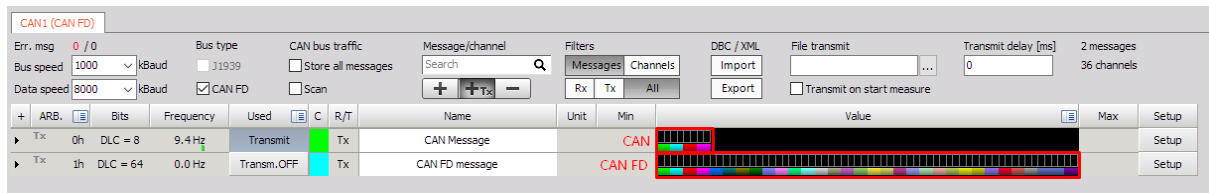


Figure 7 - CAN vs. CAN FD

In the message settings dialogue, DLC can be set up to 64 instead of 8 with CAN. This means that the total length of the message can be up to 512bits.

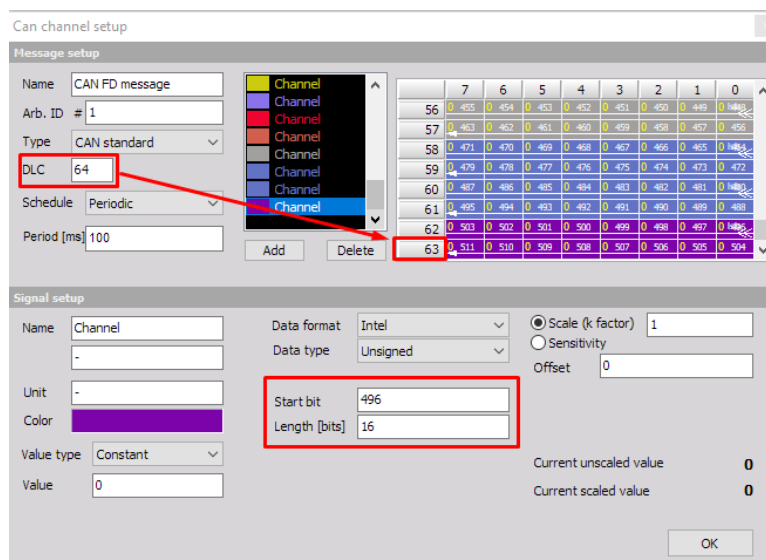


Figure 8 - Message settings