



# *Tutorial*

## **Windows 7 - Windows Firewall - Turn On or Off**



### **Disclaimer**

Working with DS-NET option in DeweSoft you are required to establish IP connection with a host acquisition device. There are many configurations of measurement units (master, slave...) but this is out of scope of this tutorial. If you encounter problems with establishing connection under Windows 7 the best thing you can do is to deactivate windows firewall that is turned ON by default. If your computer is connected to external network (internet) you are vulnerable to outside attack so we recommend that you are disconnected from internet during the time your firewall is disabled.

# Tutorial

---

## Table of contents

Windows 7 - Windows Firewall - Turn On or Off .....	1
Table of contents .....	2
Problem .....	3
Example.....	3
Possible solution .....	3
Disable windows firewall in Dewesoft .....	3
Disable Windows Firewall under Windows .....	5

---

## Problem

Unable to connect to measurement device using IP connection.

## Example

Ping.exe is a small Windows application to test is a connection with two hosts possible. Ping.exe is a command line application so we must first start cmd.exe. Start->Run->"cmd" opens command line. Next we ping the remote host. We have to know the remote host 32bit IP address.

```
C:\Users\DejanSSEW>ping 192.168.1.10
Pinging 192.168.1.10 with 32 bytes of data:
Request timed out.
Request timed out.
Request timed out.
Request timed out.

Ping statistics for 192.168.1.10:
    Packets: Sent = 4, Received = 0, Lost = 4 (100% loss),
```

## Possible solution

Disable Windows firewall.

## Disable windows firewall in Dewesoft

Go under settings->hardware setup.

Now click on the button bellow to disable windows firewall.

# Tutorial

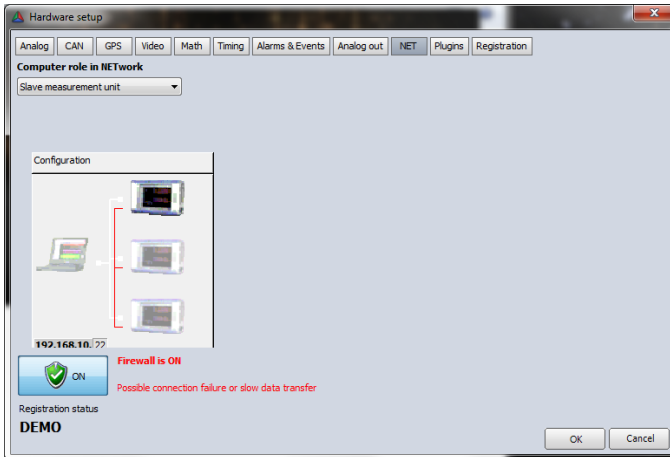


Figure 1: Firewall wall is on by default

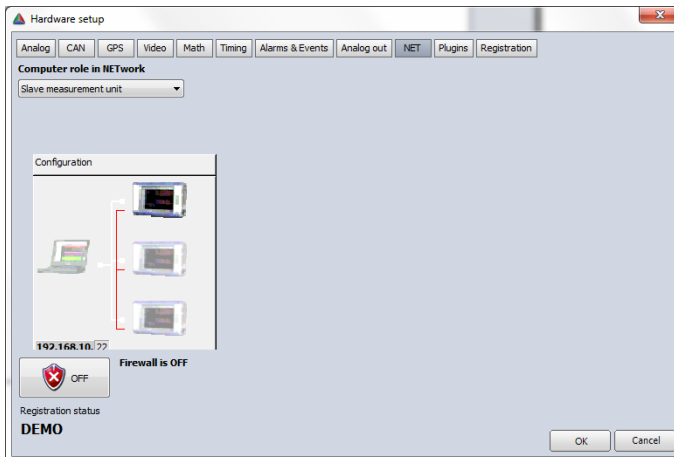


Figure 2: Disable Success

If this won't work you have problems with UAC (User Account Control). In that case you will have to disable firewall under Windows.

# Disable Windows Firewall under Windows

## Windows Firewall On and Off

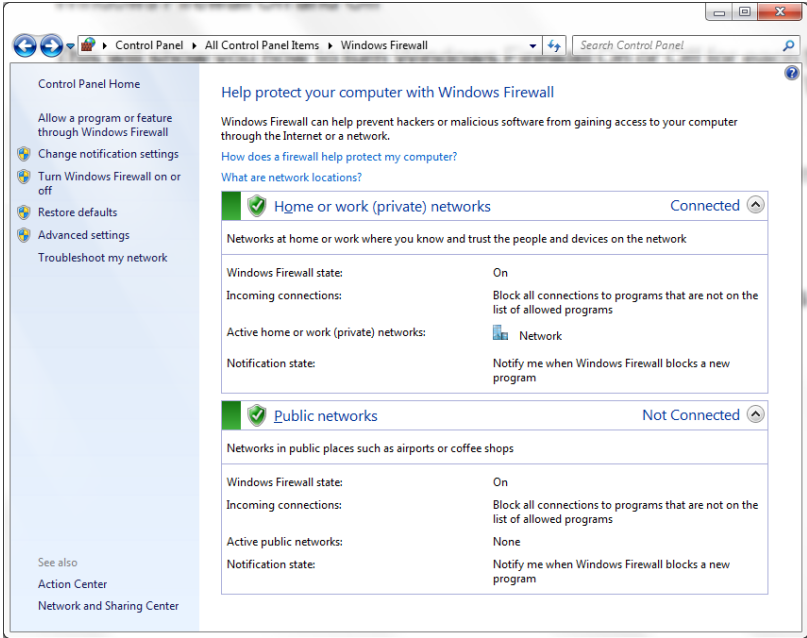


Figure 3: Windows firewall ON

# Tutorial

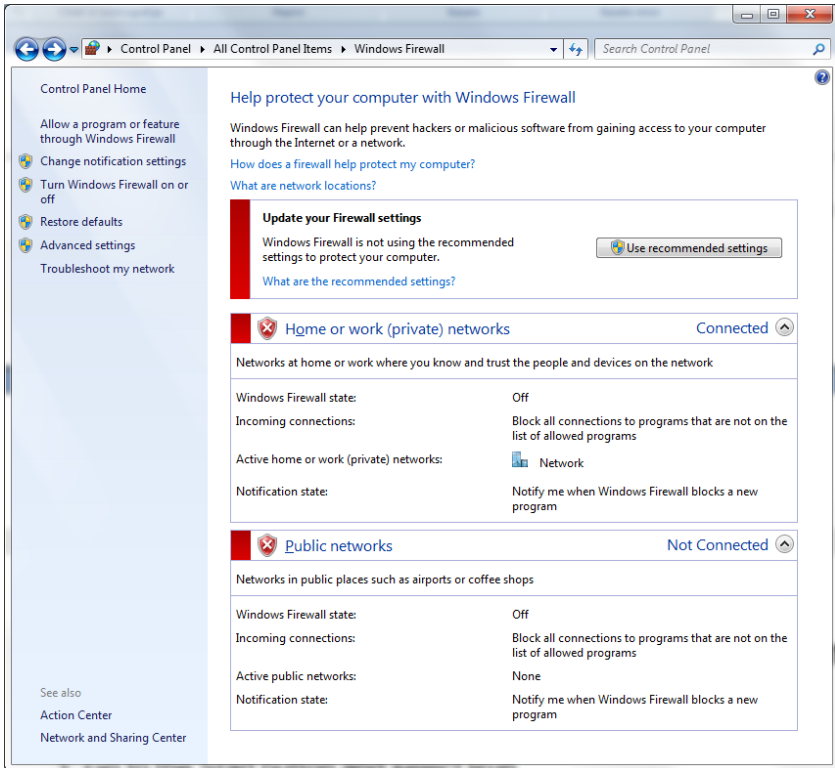


Figure 4: Firewall OFF

Now let's explain how to disable this in detail.

1. Open the Control Panel (All Items View).
2. Click on the Windows Firewall icon.
3. Click on the Turn Windows Firewall on or off link in the left blue pane. (See figure 5 below).

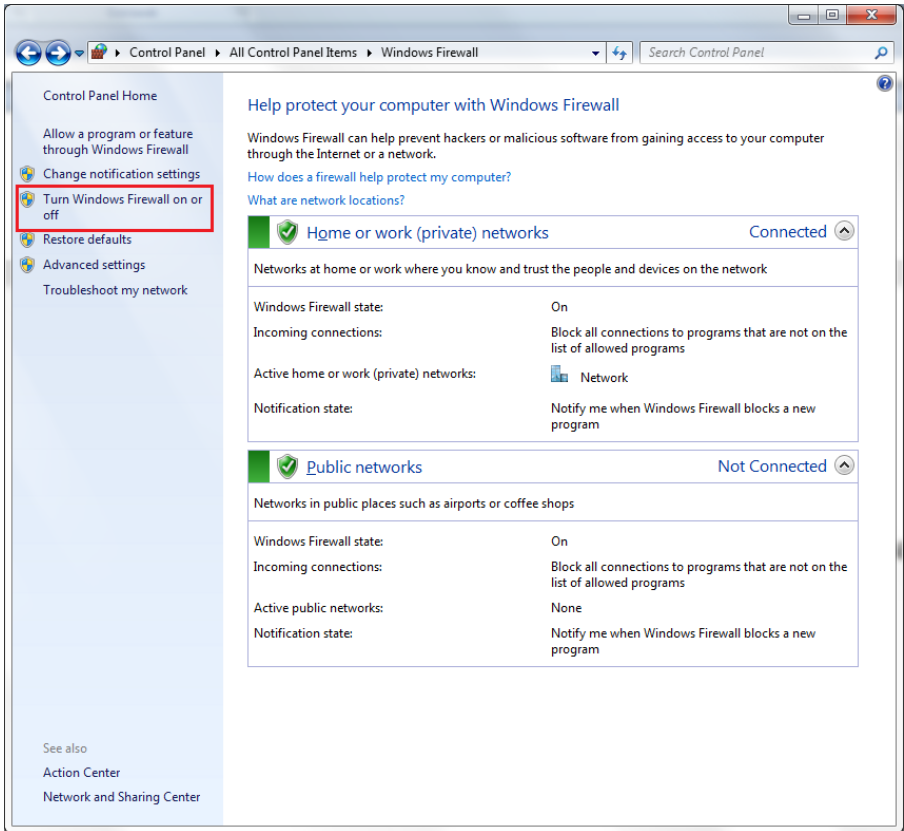


Figure 5: Disable bottom

There are two types of networks you can setup in windows 7. Most times the option home or work (private) network used. When you first connect to a new network, Windows gives you a prompt to decide which type you won't use. Later you can see you decision on figure 6.

# Tutorial

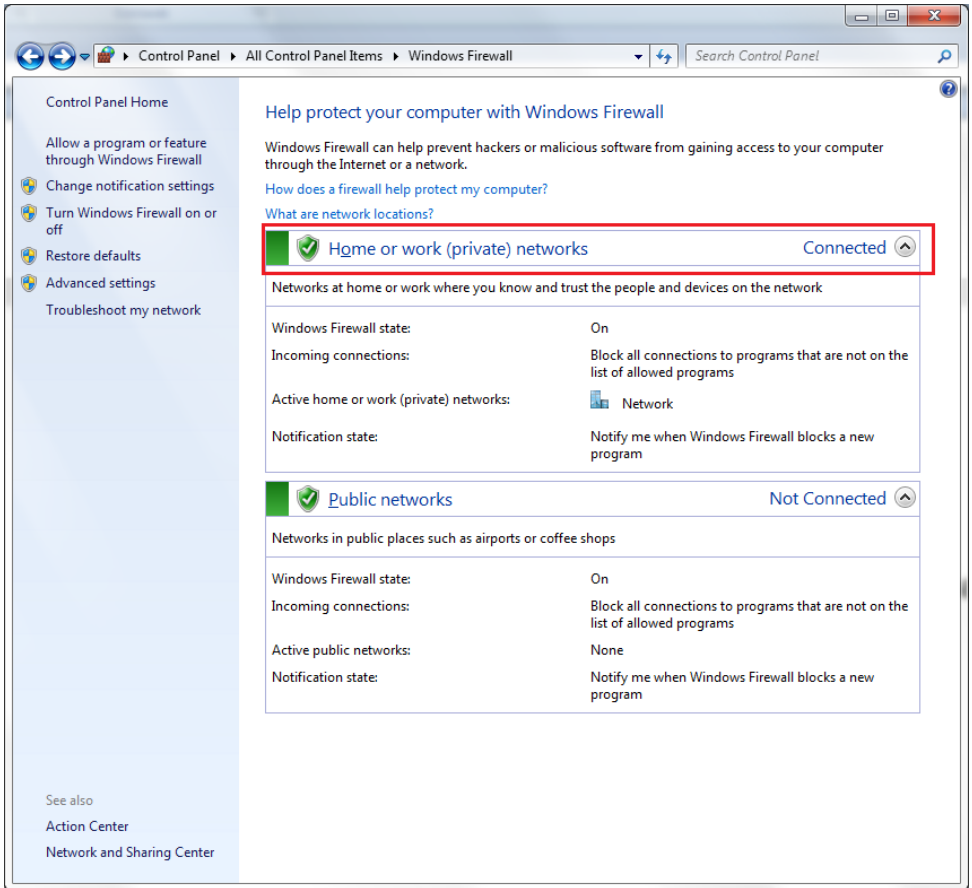


Figure 7: Connected network

Now is time to disable firewall on connected network.

4. Press the button highlighted on figure 5.
5. If prompt by UAC click OK.
6. Select button: Disable windows firewall and press OK.



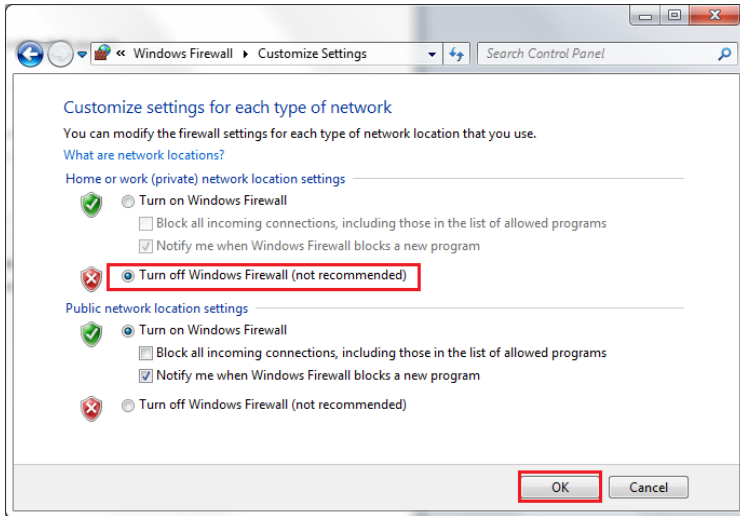


Figure 8: Windows firewall settings

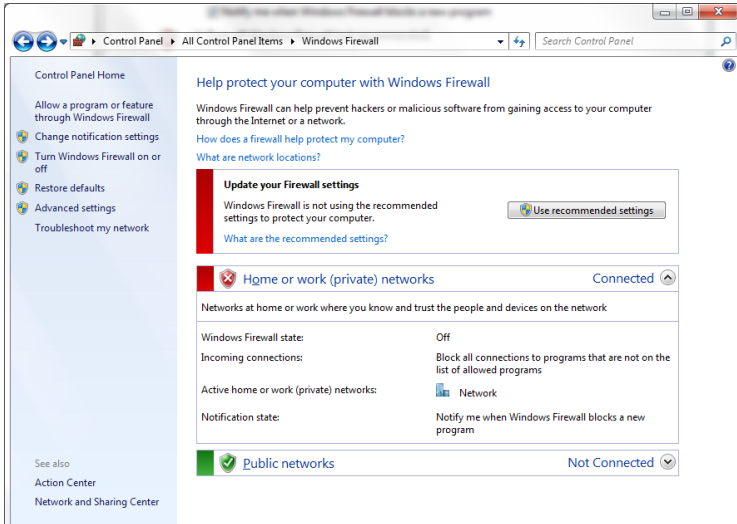


Figure 9: Result