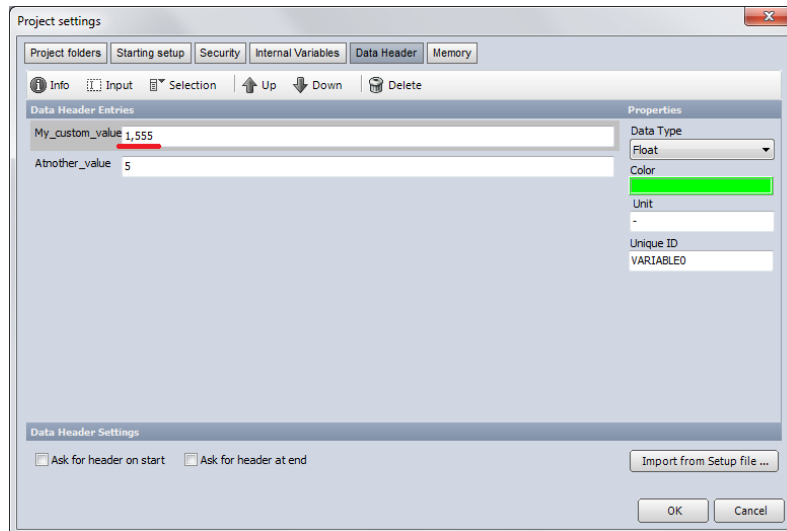


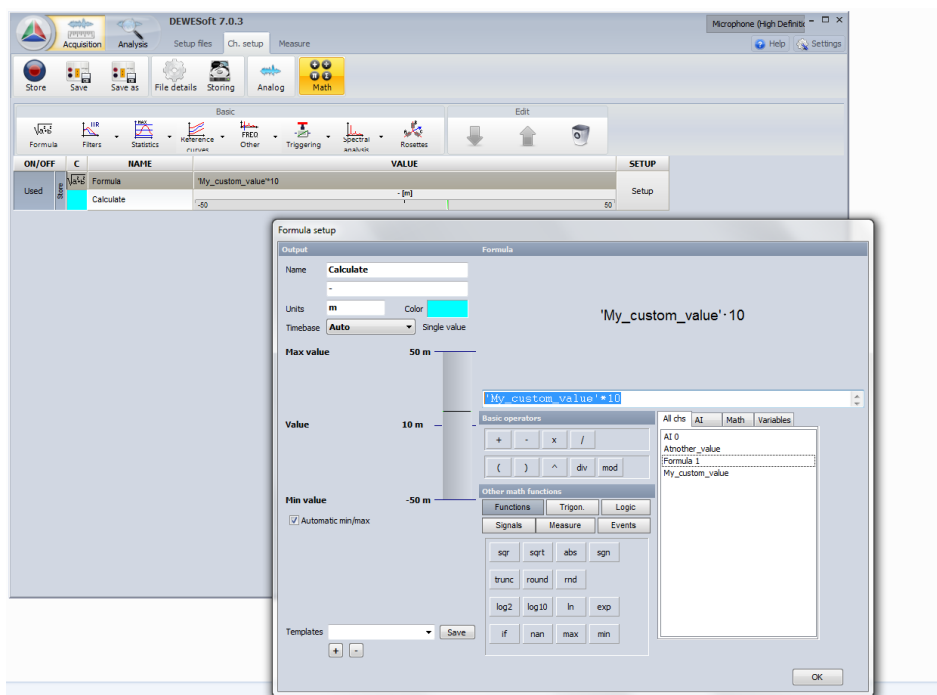
Tutorial: Using Data Headers

In DEWESoft under Acquisition mode & channel setup click: Setting -> Project settings... A new window will appear. On the top button list select »Data Header«. Here you can add as much different valuables as you like and they will be available in Math section.



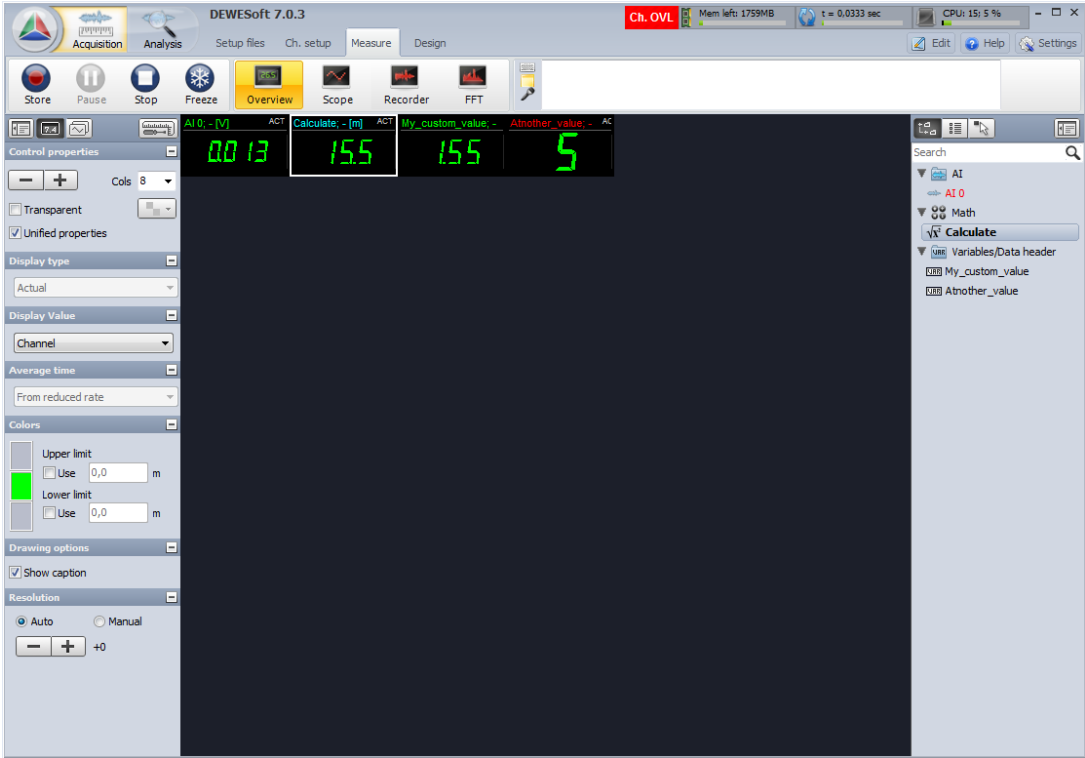
When you add a custom variable don't forget to choose appropriate "Data Type". Also note when using float time to use a come to separate values. We will correct this in next version 😊 so you will also be able to use dot!

Then in Channel setup mode click Math button, add a formula and click Setup. Here you will see your custom variables. Select it and change it at you discretion.



In our case we just multiply My_custom_value with 10.

Then go to Measurement mode and bind your formula with your data field.



Hope we solved your problem!