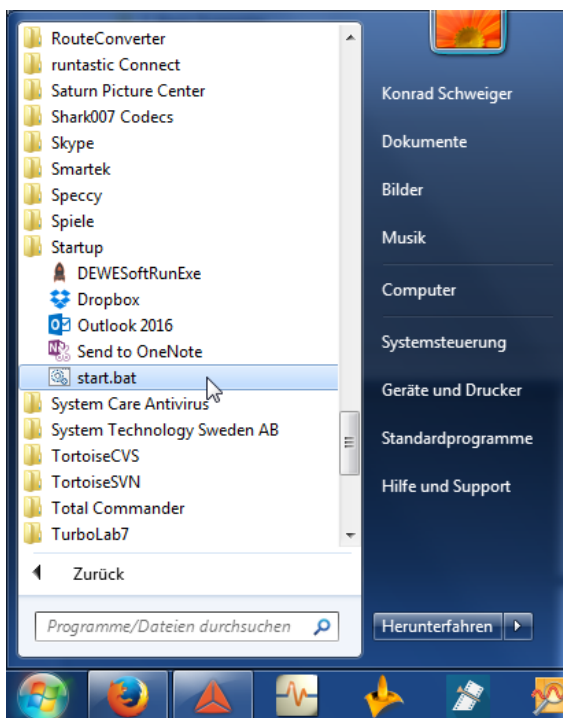


## Dewesoft Application note:

### Start measurement automatically with system boot

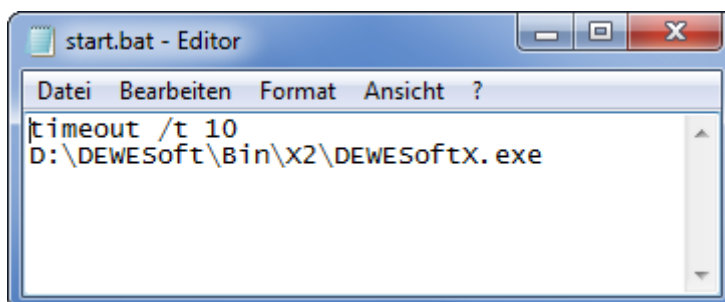
This document describes the steps to do, if you want a measurement to be started just after booting up the computer (without doing any keyboard/mouse operations).

1. With the Windows Notepad program, create a batch file, called e.g. start.bat. Please copy a link to it to the Startup folder.



2. The content of the batch file is:

```
timeout /t 10  
D:\DEWESoft\Bin\X2\DEWESoftX.exe
```

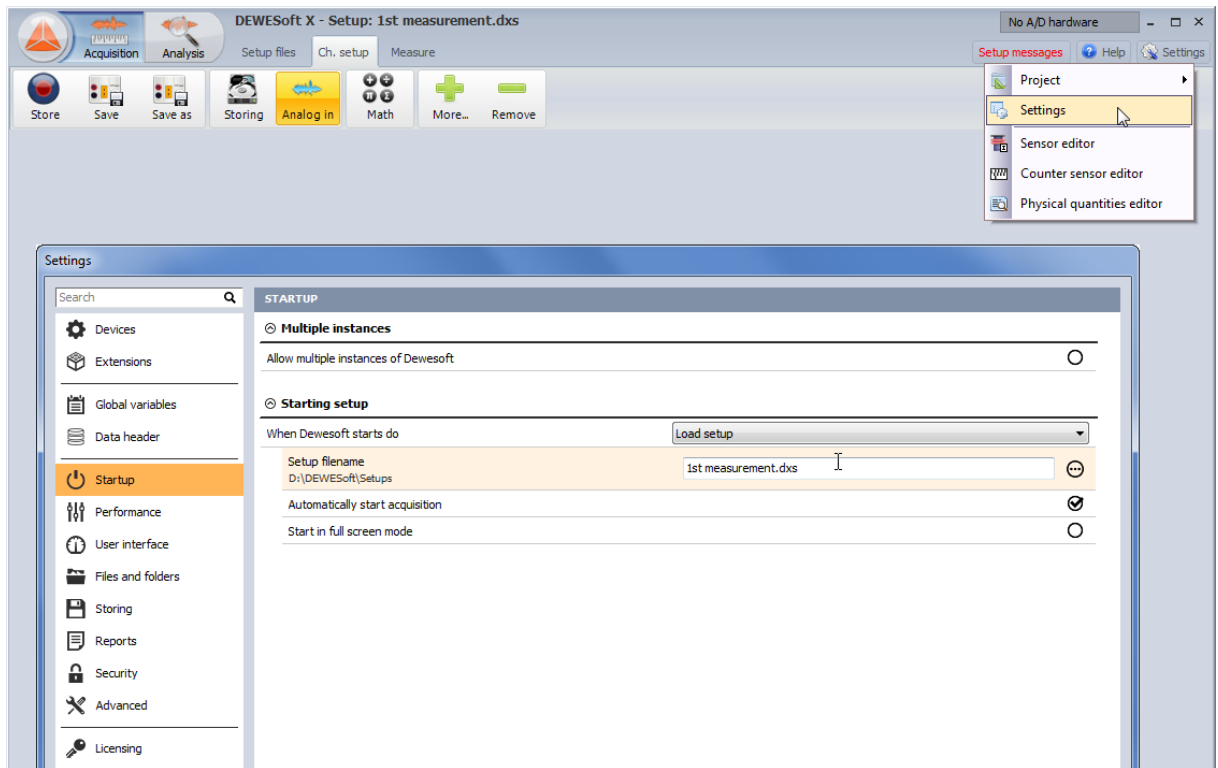


This delay before DEWESoft start is necessary that Windows loads all drivers correctly.

3. Start DEWESoft, go to Settings -> Settings -> Startup.

There you select, that DEWESoft automatically loads a setup when starting.

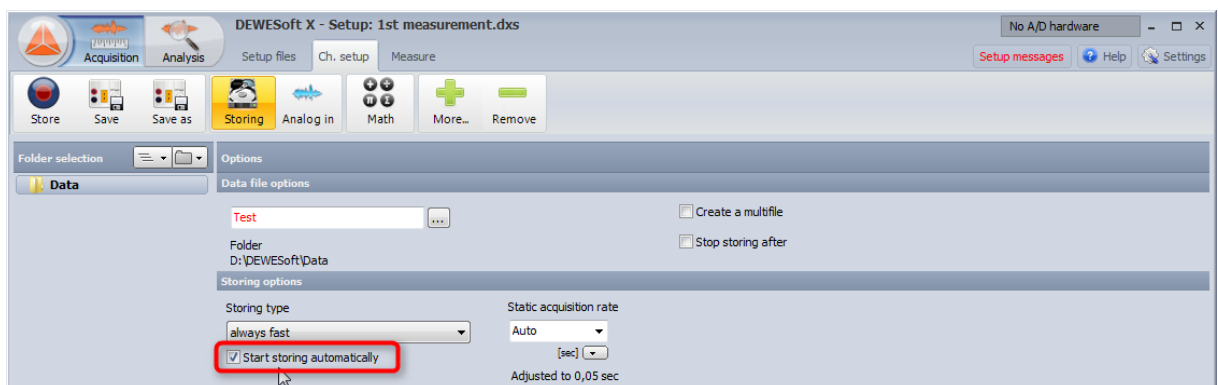
Also tick the checkbox “Automatically start acquisition”. Then DEWESoft will switch to Measure mode after loading the setup.



4. The last step is to select “Start storing automatically” in your setup.

Of course you can add trigger conditions when selecting storing type “fast on trigger...”. Then the instrument will be armed after system boot and wait for a trigger event.

(selecting option “Create a multifile” is also recommended in order not to overwrite existing files)



Done.

---

*For additional help please contact support at dewesoft.com*