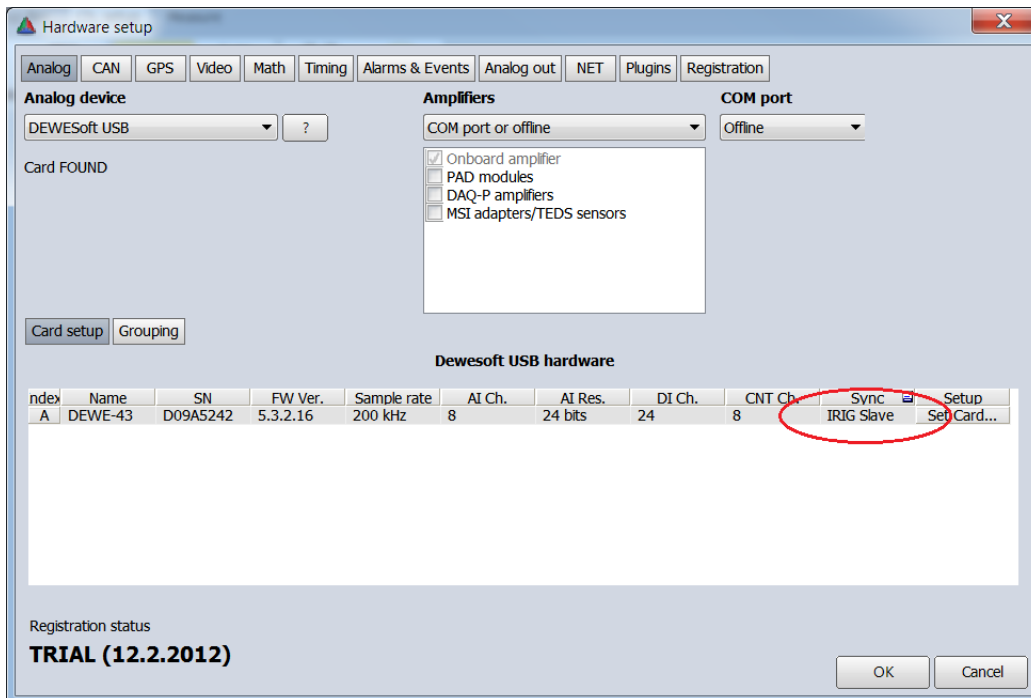


Dewesoft Instructions:

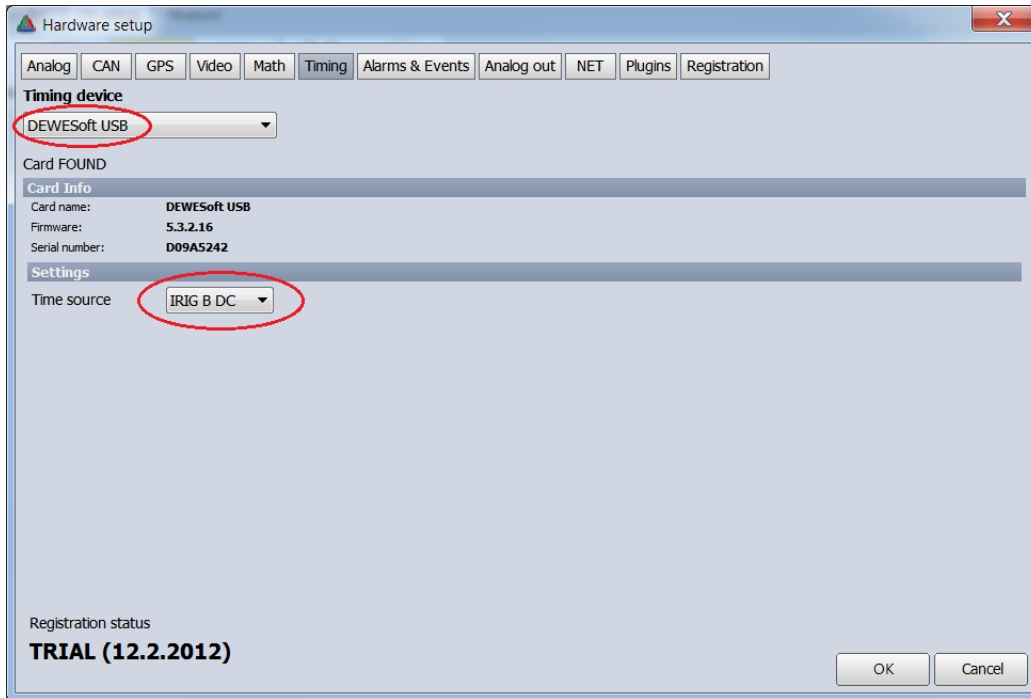


Sync DEWE 43 with external IRIG B clock

1. Install firmware 5.3.2.16 or newer to DEWE 43 from <http://www.dewesoft.com/download/section/1>
2. Connect IRIG B DC signal to DEWE 43's sync connector (CLK pin). If your signal is IRIG B AD use AC-DC adapter.
3. Run Dewesoft 7.1 > Settings > Hardware setup > Dewesoft USB > under 'Sync' select 'IRIG Slave':



4. Go to Timing tab and select 'Dewesoft USB' as Timing device and 'IRIG B' as Time source:



5. Click OK and go to Measure. Wait a moment for DEWE 43 to sync with IRIG clock.