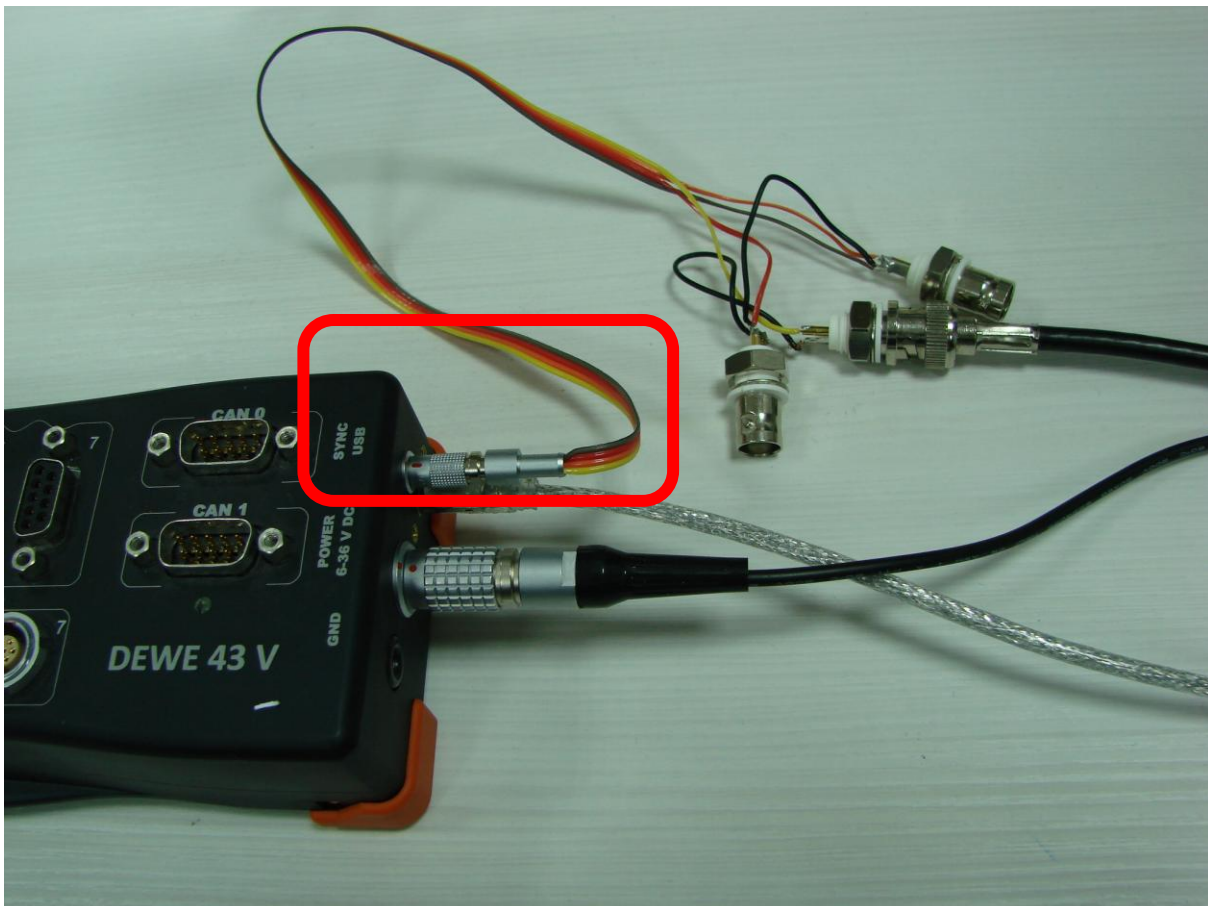


## Dewesoft Instructions:



# How to trigger alarm on DEWE-43

1. Connect your sensor to specific AI channel.
2. Use Sync USB as your output, you can use sync cable with split end where you output signal (Picture 1).



Picture 1

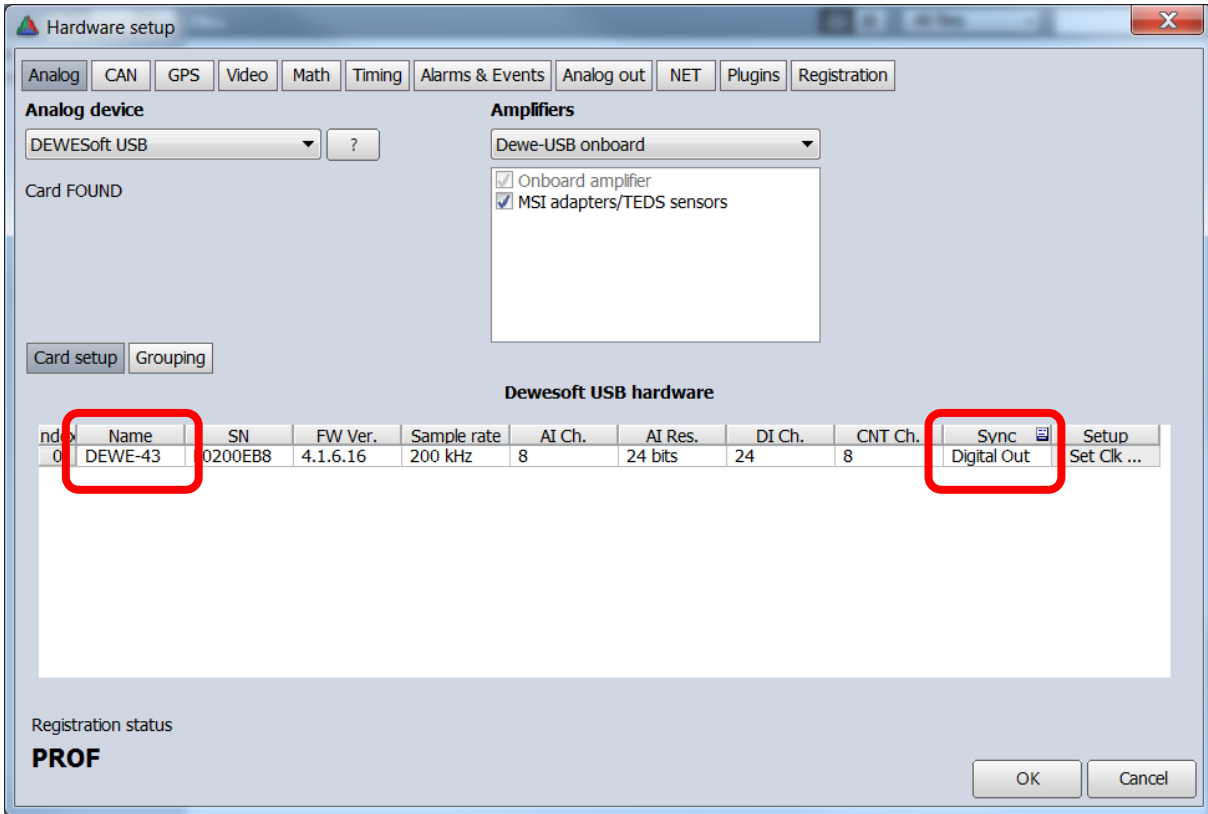
3. Dewesoft > settings > Hardware setup > Analog:

Make sure DEWE-43 is recognized. Under Sync choose Digital Out

Analog device: DEWESoft USB

Amplifiers: Dewe-USB onboard, check MSI adapters/TED sensors

(Picture 2).



Picture 2

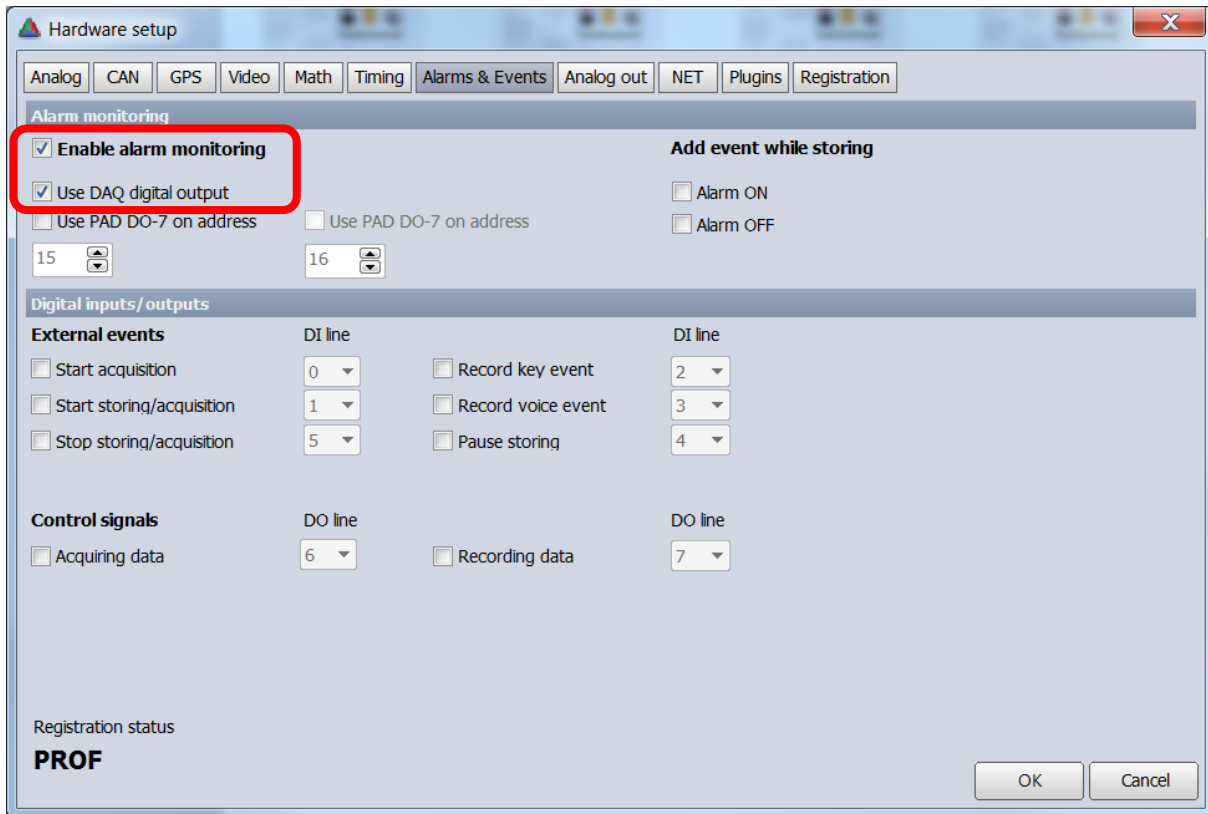
#### 4. Alarms & Events:

Check Enable alarm monitoring

Check Use DAQ digital output

(Picture 3)

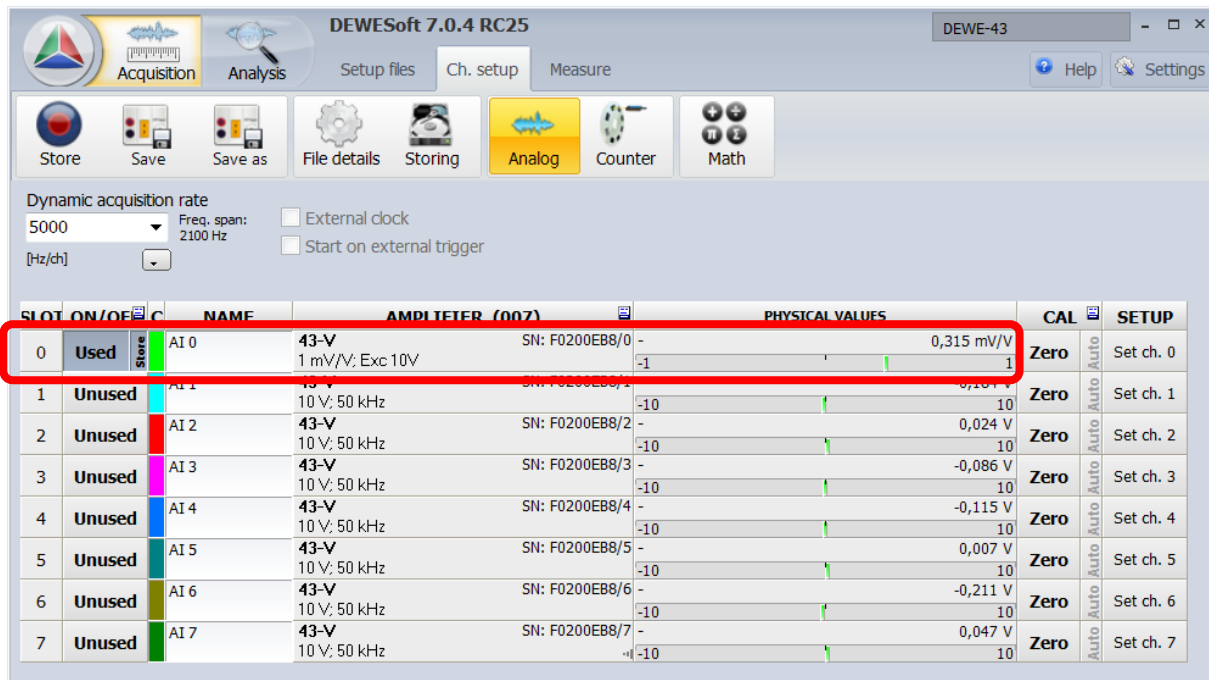
OK



Picture 3

## 5. Ch. setup:

Analog: Make sure that the slot you use is available and working (Picture 4).



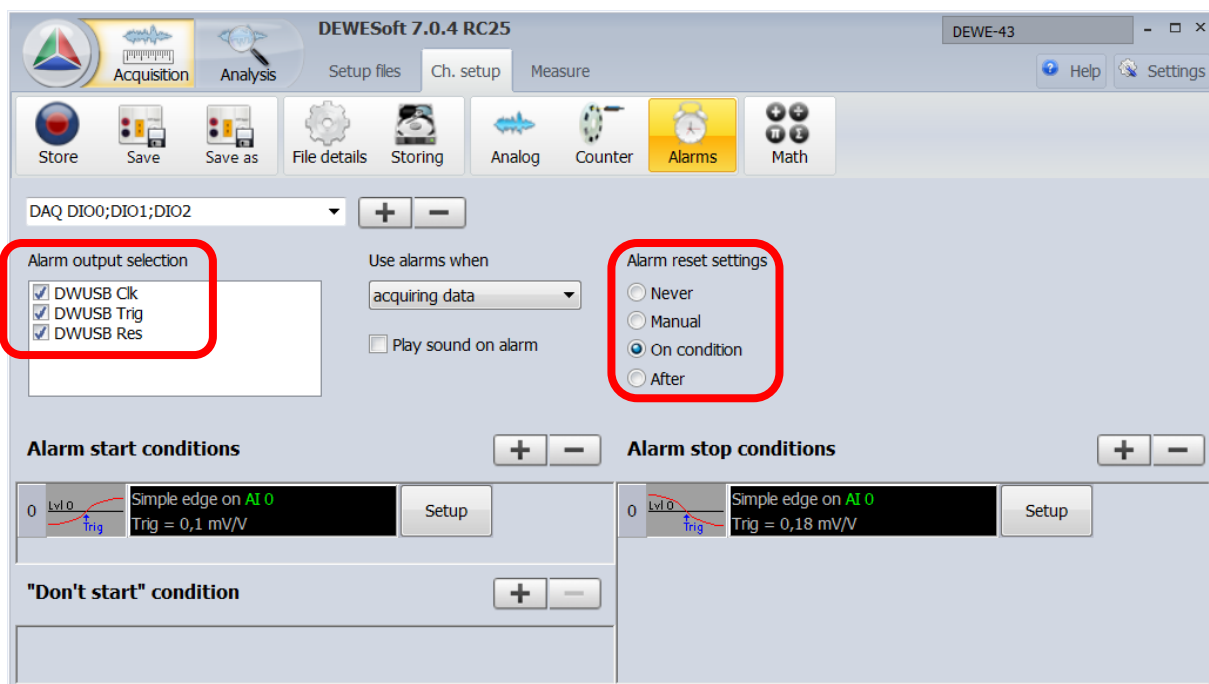
Picture 4

## 6. Measure:

Alarm output selection: if you have more lines be sure to output the right one.

Alarm reset settings:

On condition > set alarm start condition (Picture 5).



Picture 5