

Dewesoft Instructions:

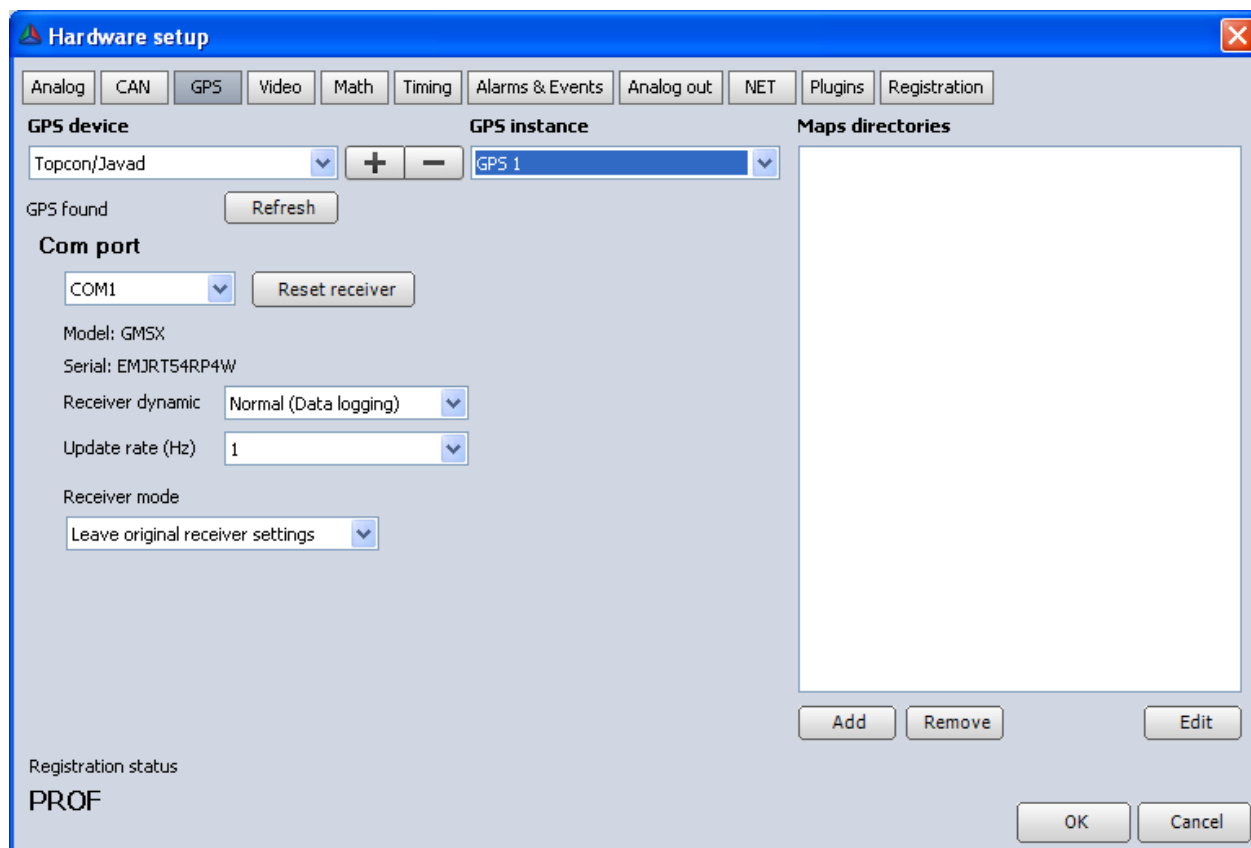


Minitaur (DEWE-101)

Connect and enable multiple GPS antennas

Note: Dewesoft 7.10 b36 or newer is needed for multiple GPS support.

1. Enable internal DEWE-101 GPS and click '+' sign:



2. Specify secondary GPS:

The screenshot shows the 'Hardware setup' dialog box with the 'GPS' tab selected. The dialog has a title bar with a close button. Below the title bar is a row of tabs: Analog, CAN, GPS (selected), Video, Math, Timing, Alarms & Events, Analog out, NET, Plugins, and Registration. The main area is divided into three sections: 'GPS device', 'GPS instance', and 'Maps directories'. The 'GPS device' section contains a dropdown menu set to 'NMEA compatible GPS', plus and minus buttons, a 'Refresh' button, and fields for 'Com port' (COM11), 'Baud rate' (4800), and 'Flow control' (None). There is also an 'Auto search' button and a checkbox for 'Send init string'. The 'GPS instance' section has a dropdown menu set to 'GPS 2'. The 'Maps directories' section is a large empty box with 'Add', 'Remove', and 'Edit' buttons below it. At the bottom left, the 'Registration status' is shown as 'PROF'. At the bottom right are 'OK' and 'Cancel' buttons.

Hardware setup

Analog CAN **GPS** Video Math Timing Alarms & Events Analog out NET Plugins Registration

GPS device **GPS instance** **Maps directories**

NMEA compatible GPS + - GPS 2

GPS found Refresh

Com port
COM11

Baud rate
4800 Auto search

Flow control
None

Send init string

Registration status
PROF

Add Remove Edit

OK Cancel

3. On Ch. Setup two buttons appears with available channels:

DEWESoft 7.1 b36 DEWE-43

Acquisition Analysis Setup files Ch. setup Measure Help Settings

Store Save Save as File details Storing Analog Counter GPS Math

GPS 1 GPS 2

SLOT	ON/OFF	C	NAME	VALUE	SETUP
0	Used	X	X absolute	15°3,311' E	Setup
1	Used	Y	Y absolute	46°10,305' N	Setup
2	Unused	Z	Z	340.95 m	Setup
3	Used	Velocity	Velocity	0 km/h	Setup
4	Unused	Direction	Direction	337.59 deg.	Setup
5	Unused	Distance	Distance	0.0 m	Setup
6	Unused	Used satellites	Used satellites	6	Setup
7	Unused	Current sec	Current sec	29510	Setup
8	Unused	Mark input	Mark input	0	Setup
9	Unused	Acceleration	Acceleration	0 m/s ²	Setup
10	Unused	GPS fix quality	GPS fix quality	Standalone	Setup
11	Unused	NMEAlog	NMEAlog	\$GPGSV,2,2,07,21,81,153,41,2	Setup

PPS sync Standalone

Show NMEA log

DEWESoft 7.1 b36 DEWE-43

Acquisition Analysis Setup files Ch. setup Measure Help Settings

Store Save Save as File details Storing Analog Counter GPS Math

GPS 1 GPS 2

SLOT	ON/OFF	C	NAME	VALUE	SETUP
0	Used	X	X absolute	15°3,313' E	Setup
1	Used	Y	Y absolute	46°10,306' N	Setup
2	Unused	Z	Z	340.9 m	Setup
3	Used	Velocity	Velocity	0 km/h	Setup
4	Unused	Direction	Direction	0 deg.	Setup
5	Unused	Used satellites	Used satellites	7	Setup
6	Unused	Current sec	Current sec	29542	Setup
7	Unused	NMEAlog	NMEAlog	\$GPGSV,3,3,09,31,21,220,39,...	Setup

PPS sync Standalone

Show NMEA log

4. Measure: selected channels appear separately under Device1, Device2, etc.

