

Dewesoft Instructions:

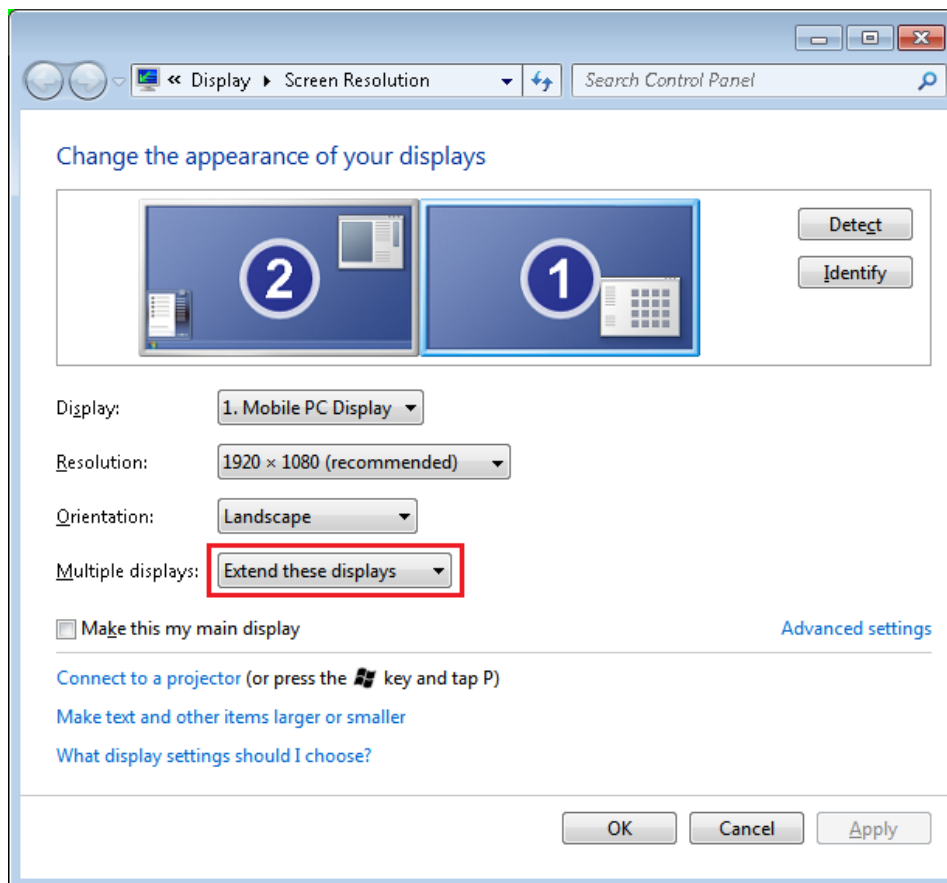


How to use Multi monitor

In Dewesoft 7.1 b54 and newer you can use many monitors **for displaying separate Measure screen!**

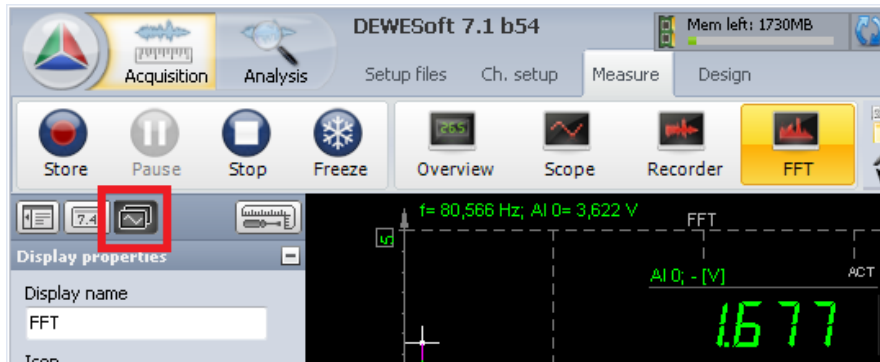
This is simple how to step-by-step:

1. Make sure that all displays are visible in Windows. To check that: right click on desktop > Screen resolution > Multiple displays > set to “Extend these displays”:



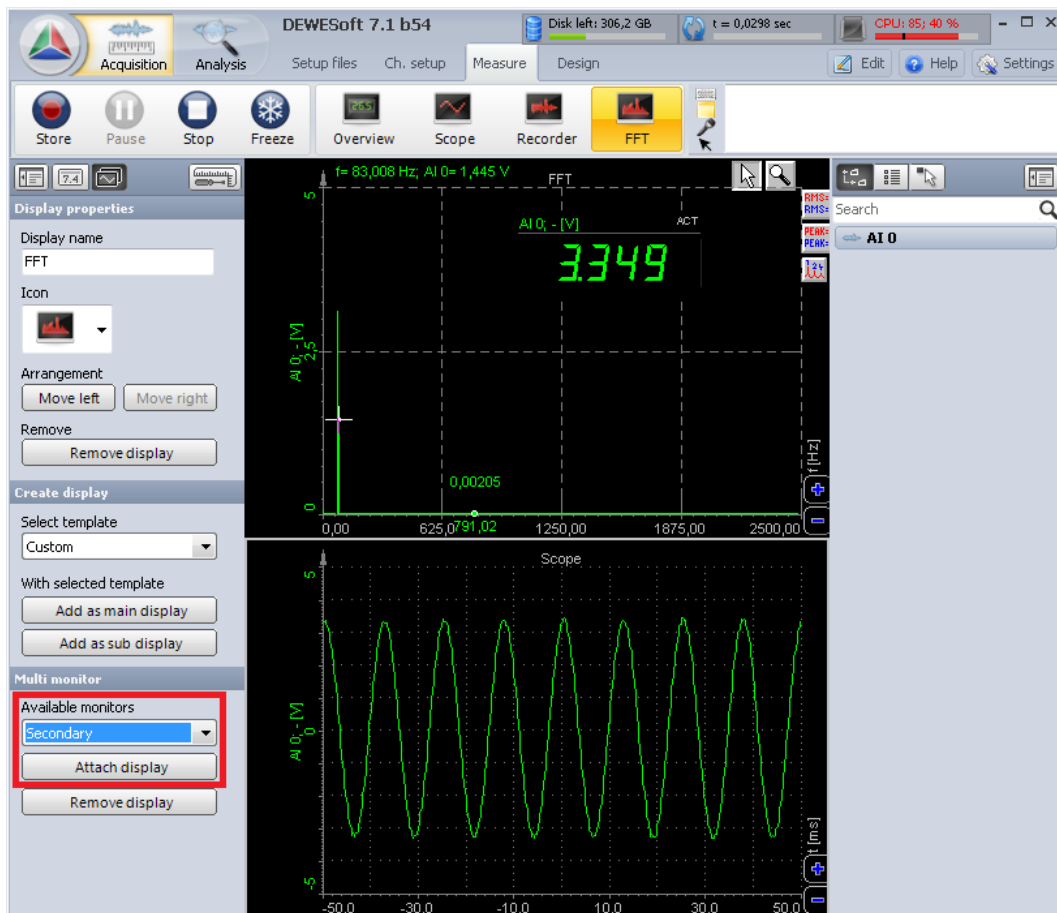
Screenshot 1.

2. Setup the Measure display as you want it to look on secondary display. Click on Display icon as shown in screenshot 2:

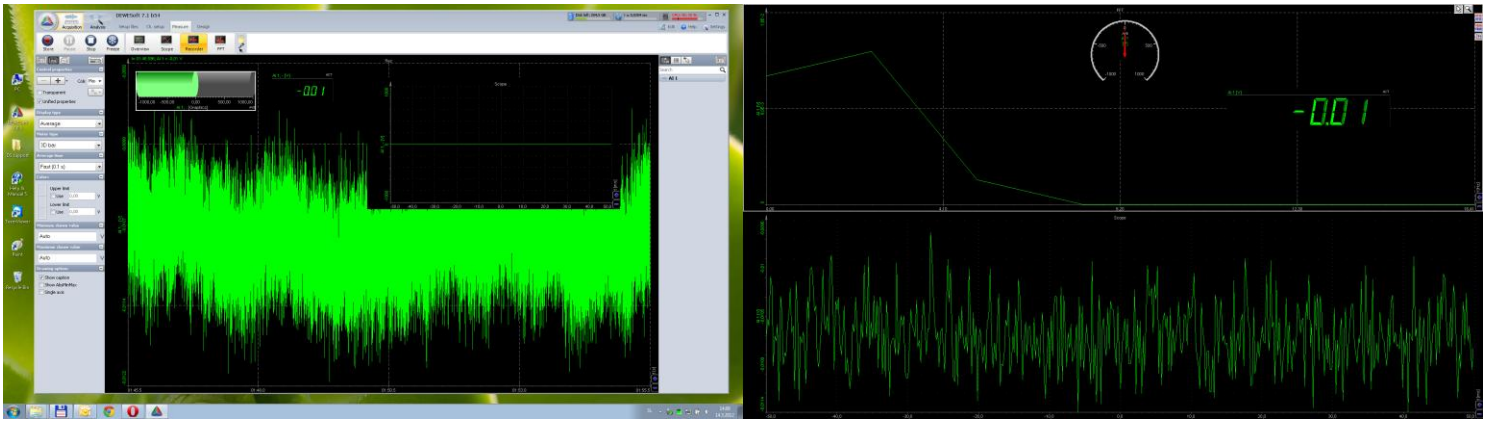


Screenshot 2.

3. See Multi monitor section (screenshot 3). Now you can select Secondary monitor and click “Attach display”. Display appears on secondary monitor (screenshot 4).



Screenshot 3.



Screenshot 4.

4. Repeat step 3 for other monitors.

In this document we described how to use extra monitors to show more than one measuring screen.