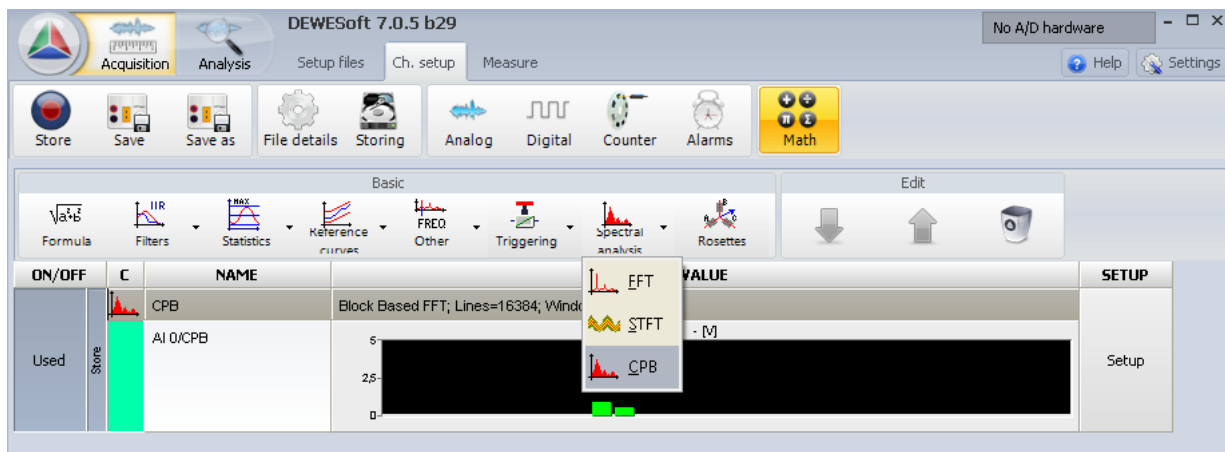


Dewesoft Instructions:

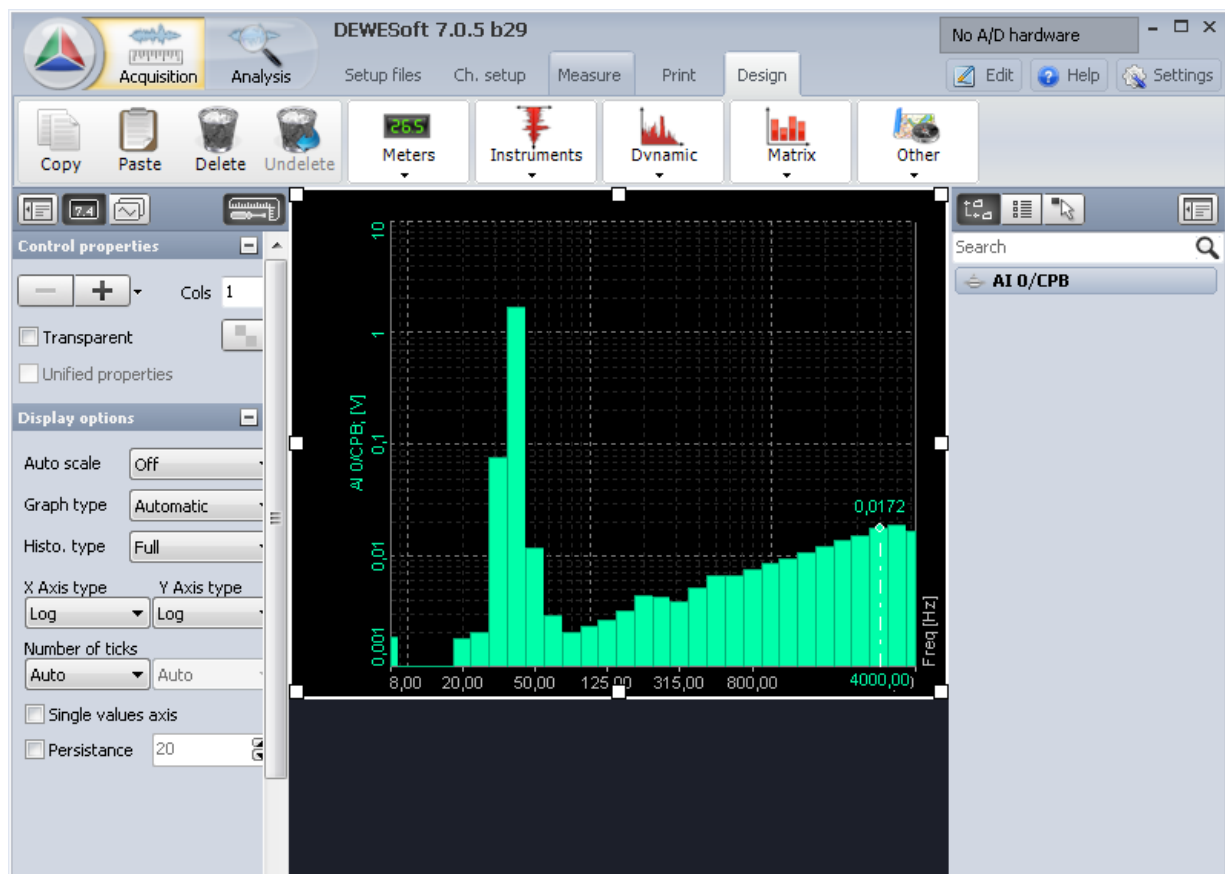
How to add reference curve on CPB graph



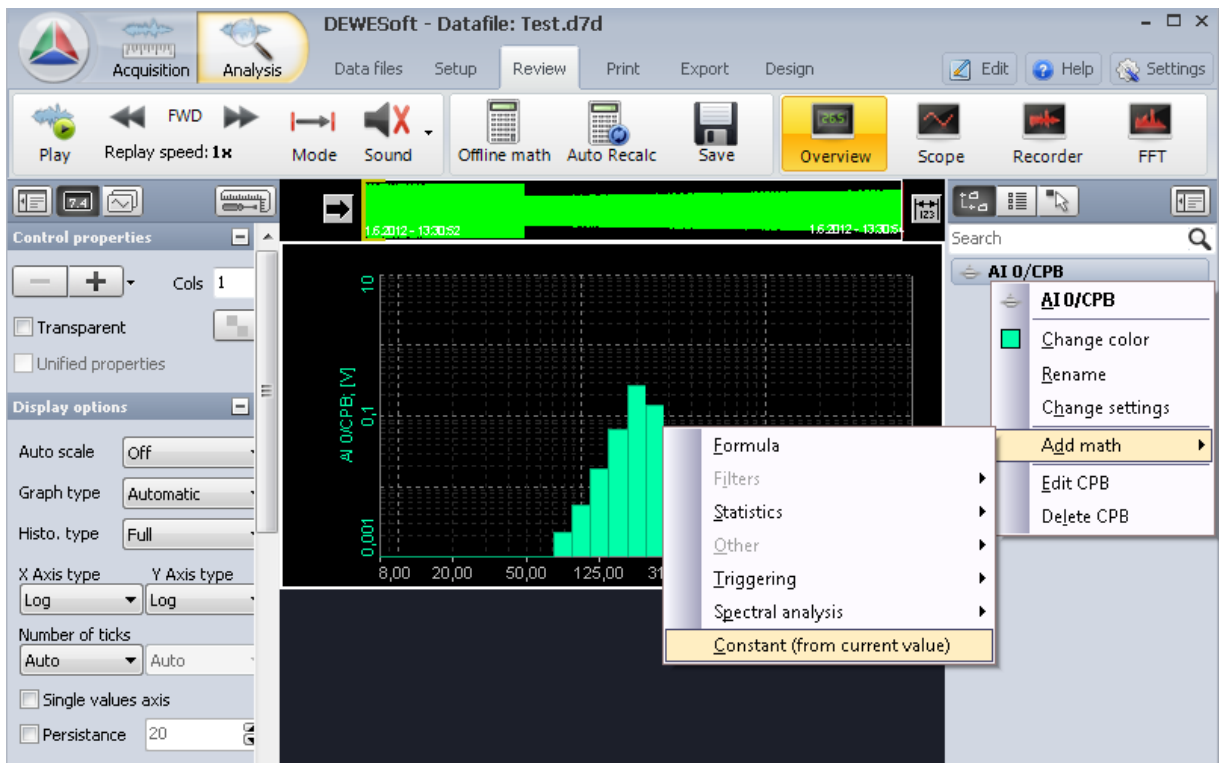
1. Add Math channel > Spectral analysis > CPB:



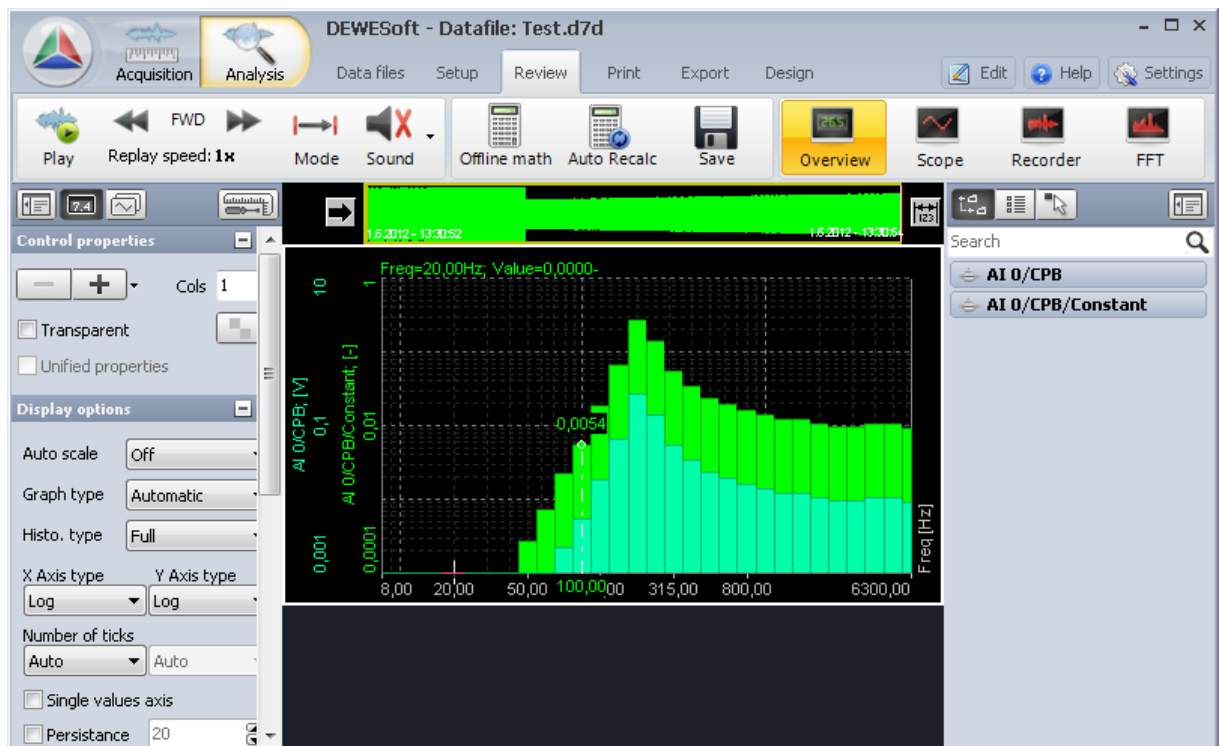
2. Go to Measure and display CPB graph:



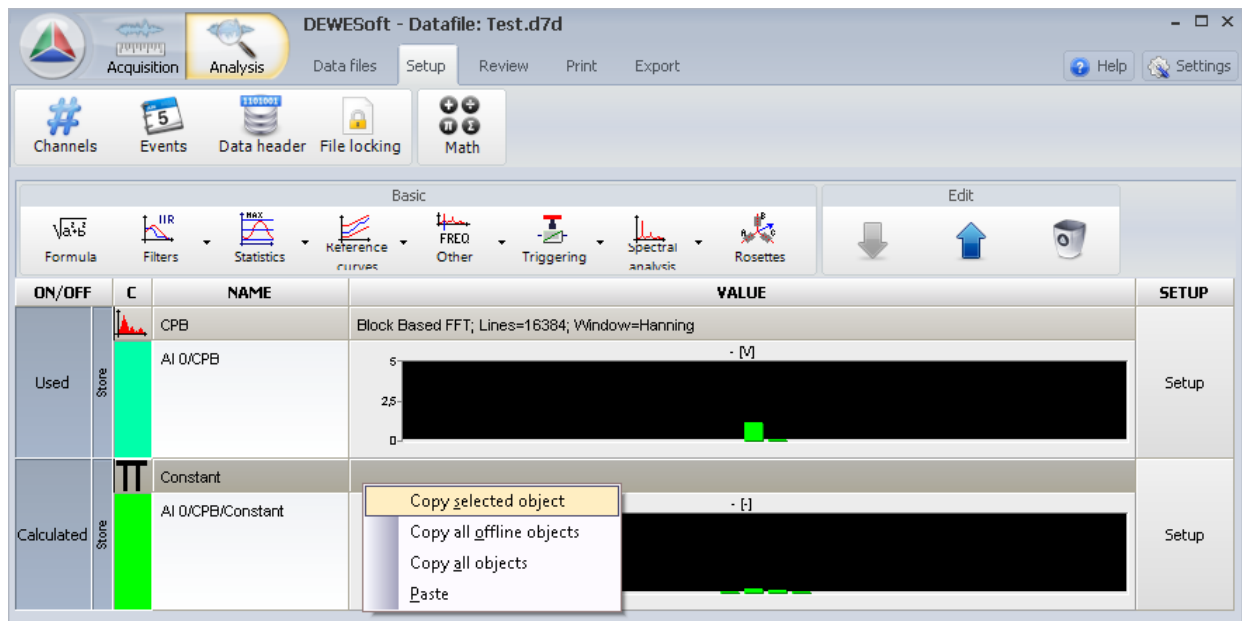
3. Store graph, go to Analysis, right click on channel name > Add math > Constant (from current value):



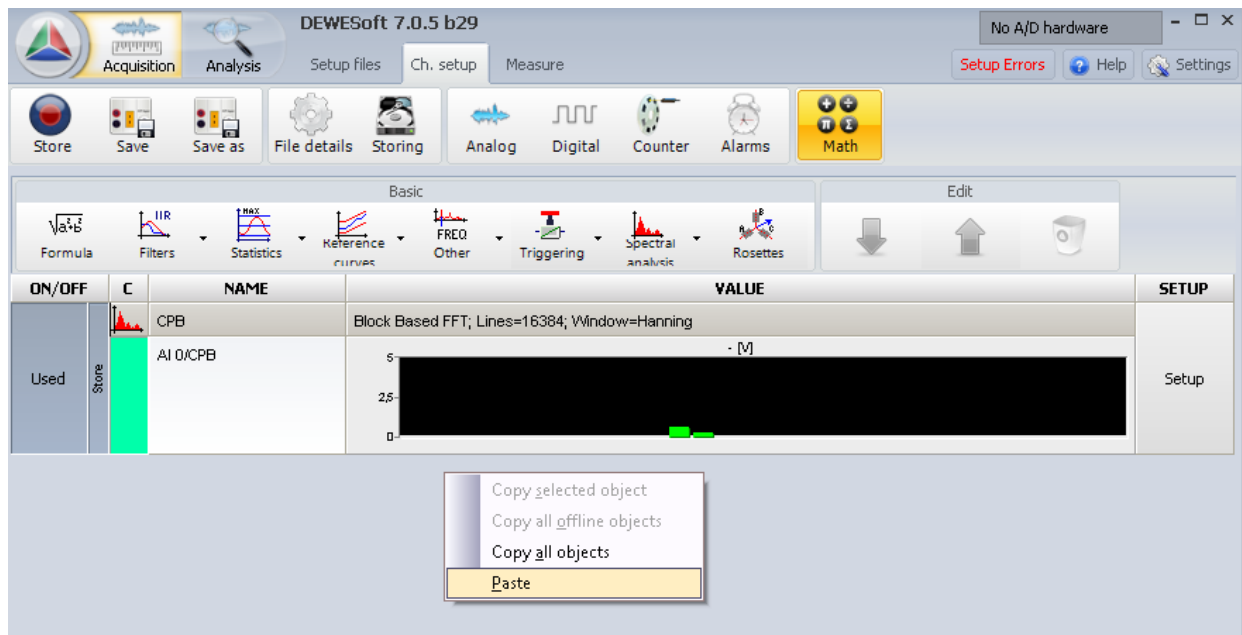
4. Note that now you can display both channels on the same graph:



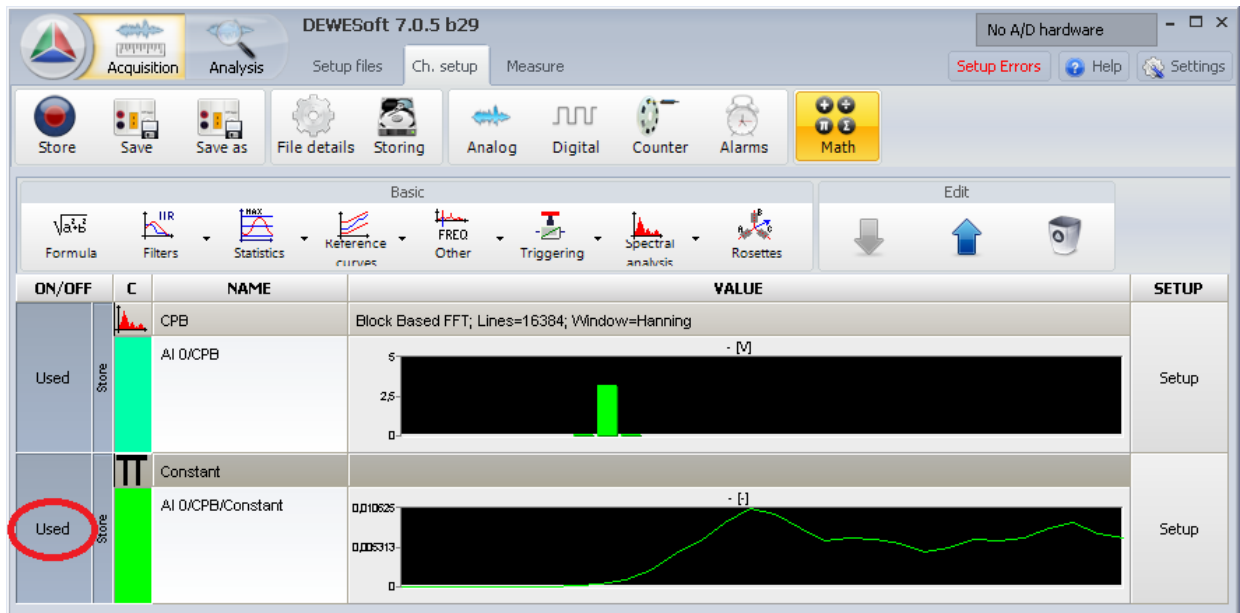
5. Go to Offline Math > right click on channel and click on “Copy selected object”:



6. Go to Acquisition > Ch. Setup > Right click on empty space below all channels > Paste:



7. Be sure to mark pasted channel as Used:



Now you also have Reference CPB curve in Acquisition. Note that you can also edit Constant graph if you right click channel > Edit constant.