

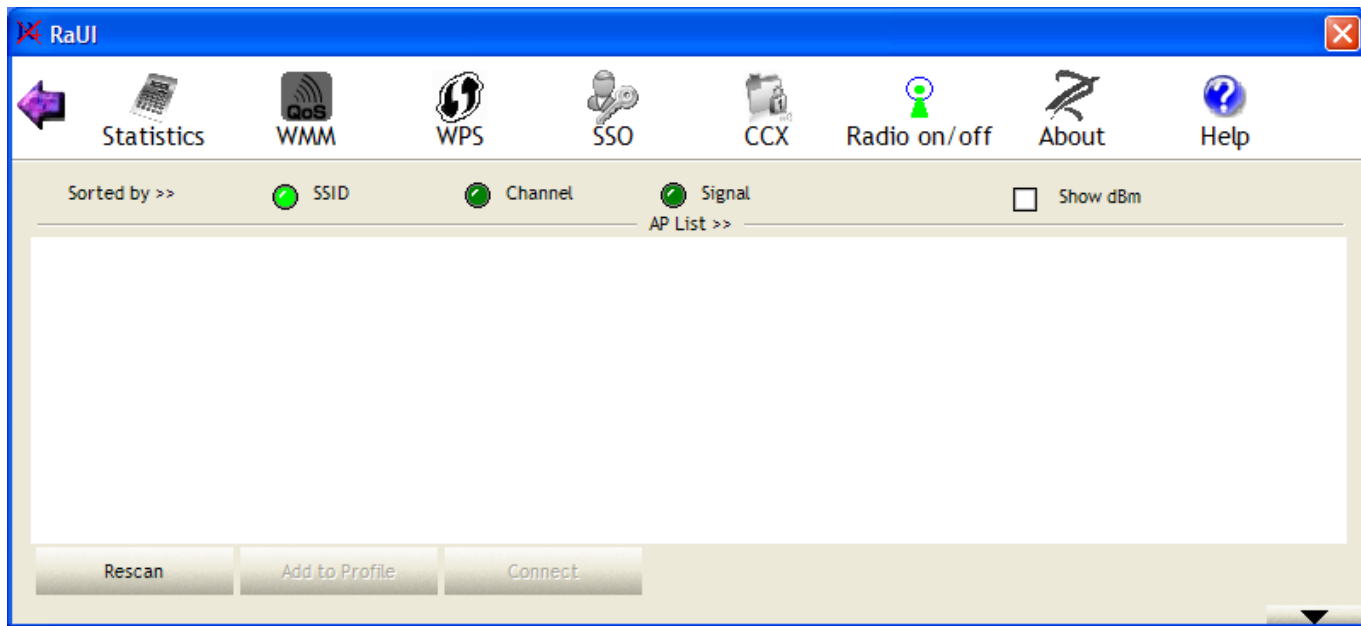
Dewesoft Instructions:

**Minitaur (DEWE-101):**

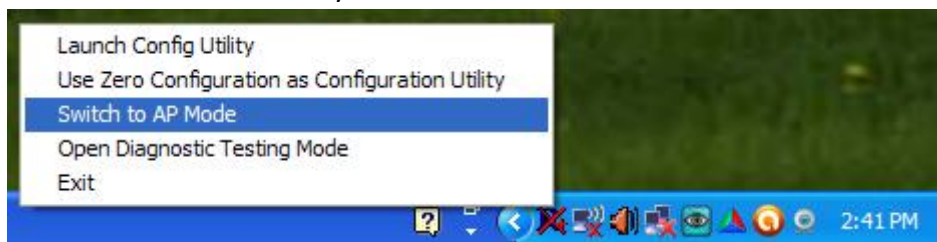


**RaLink: Establish Access Point and connect NET option**

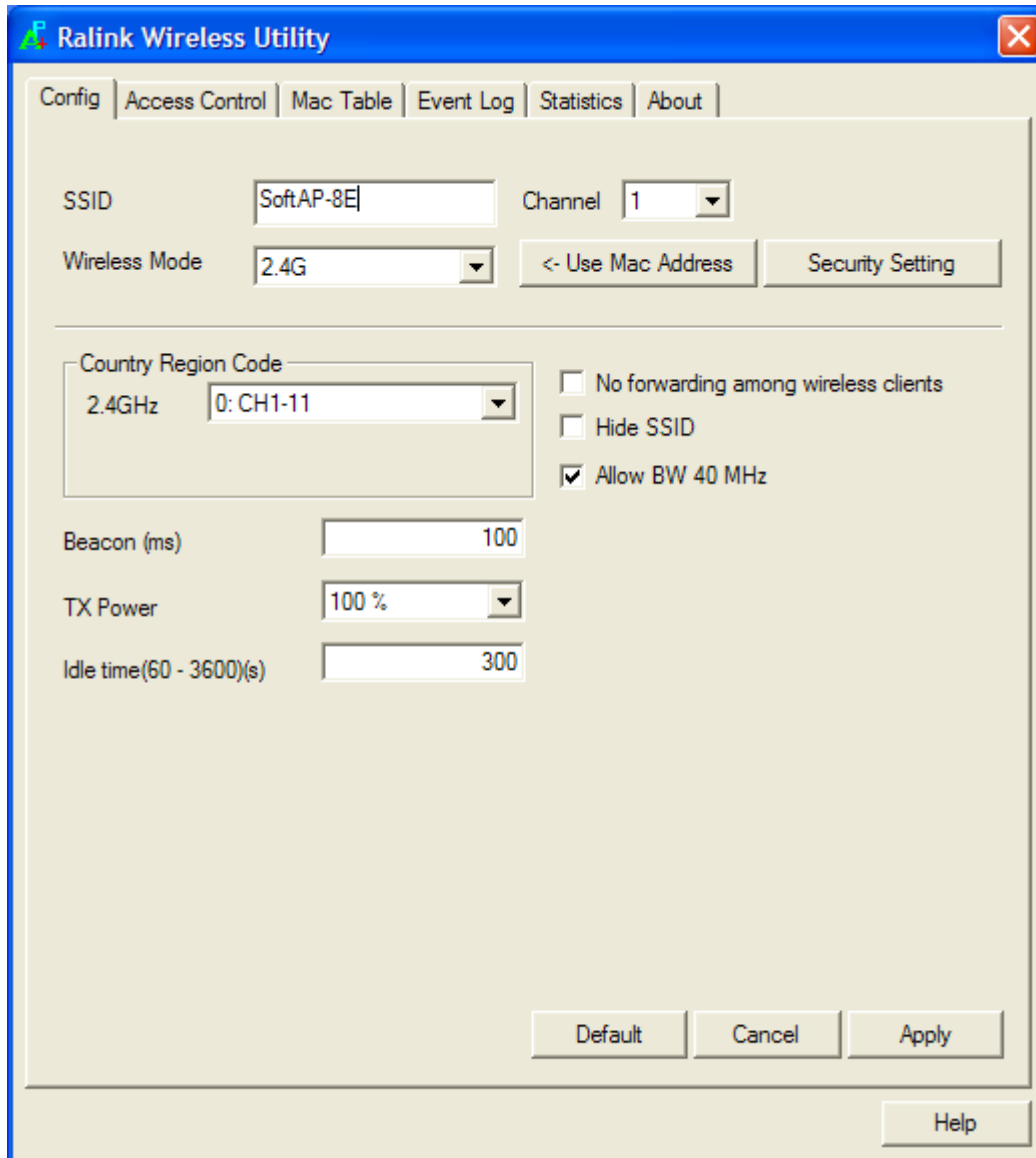
1. On Minitaur Run RaUI and enable »Radio on/off«:



2. Run Ralink Wireless Utility and switch to AP mode:



3. Enter SSID, Apply:

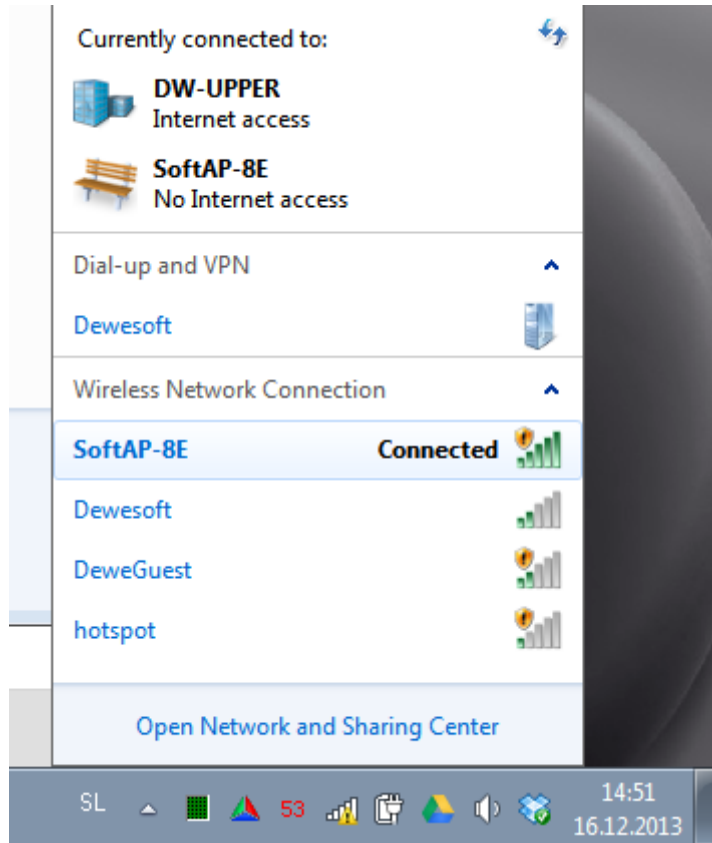


4. If firewall starts, disable it.

5. Connect antenna to WLAN connector for better signal.

6. Run Dewesoft.

7. On PC enable WLAN and connect to Minitaur (SSID):



8. Run Dewesoft.

9. Click NET icon upper right corner. (You can measure bandwidth.)

10. Specify computers as master/slave/measurement unit...

11. Connect to measuring unit (Minitaur).